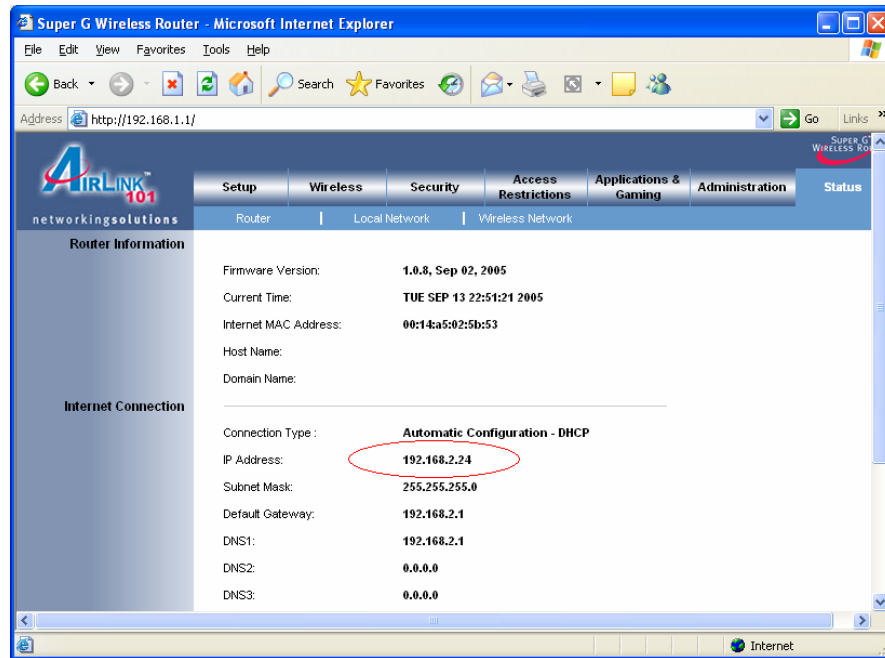
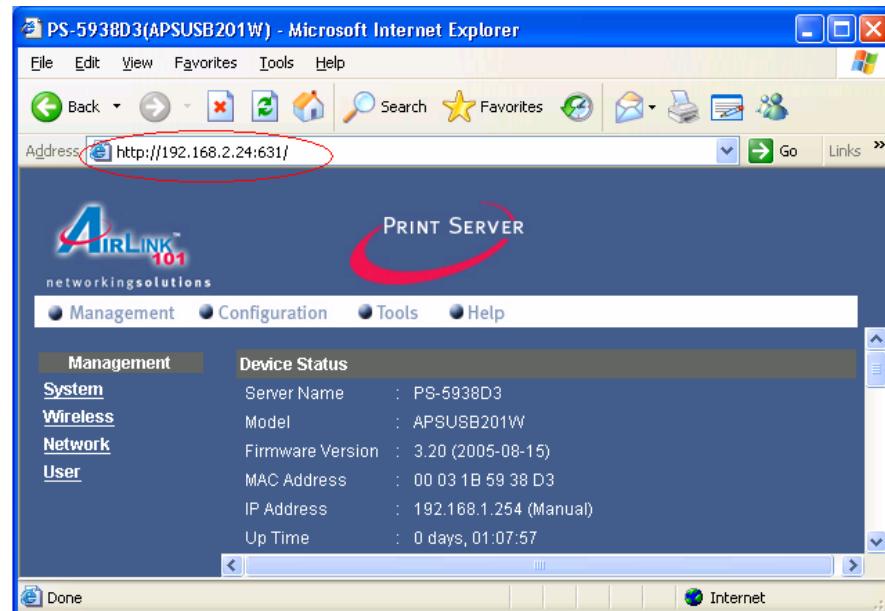


3. Check the WAN IP address of your NAT router.



4. Test port forwarding with a computer outside the router with the WAN IP address and the port (631) configured.



5. Add network printer with IPP port http://wan_IP:631/port_name_in_print_server

Add Printer Wizard

Specify a Printer
If you don't know the name or address of the printer, you can search for a printer that meets your needs.

What printer do you want to connect to?

Browse for a printer

Connect to this printer (or to browse for a printer, select this option and click Next):

Name:

Example: \\server\printer

Connect to a printer on the Internet or on a home or office network:

URL:

Example: http://server/printers/myprinter/.printer

< Back Next > Cancel