



Model # AP411W

Quick Installation Guide

Ver. 1A

Section 1

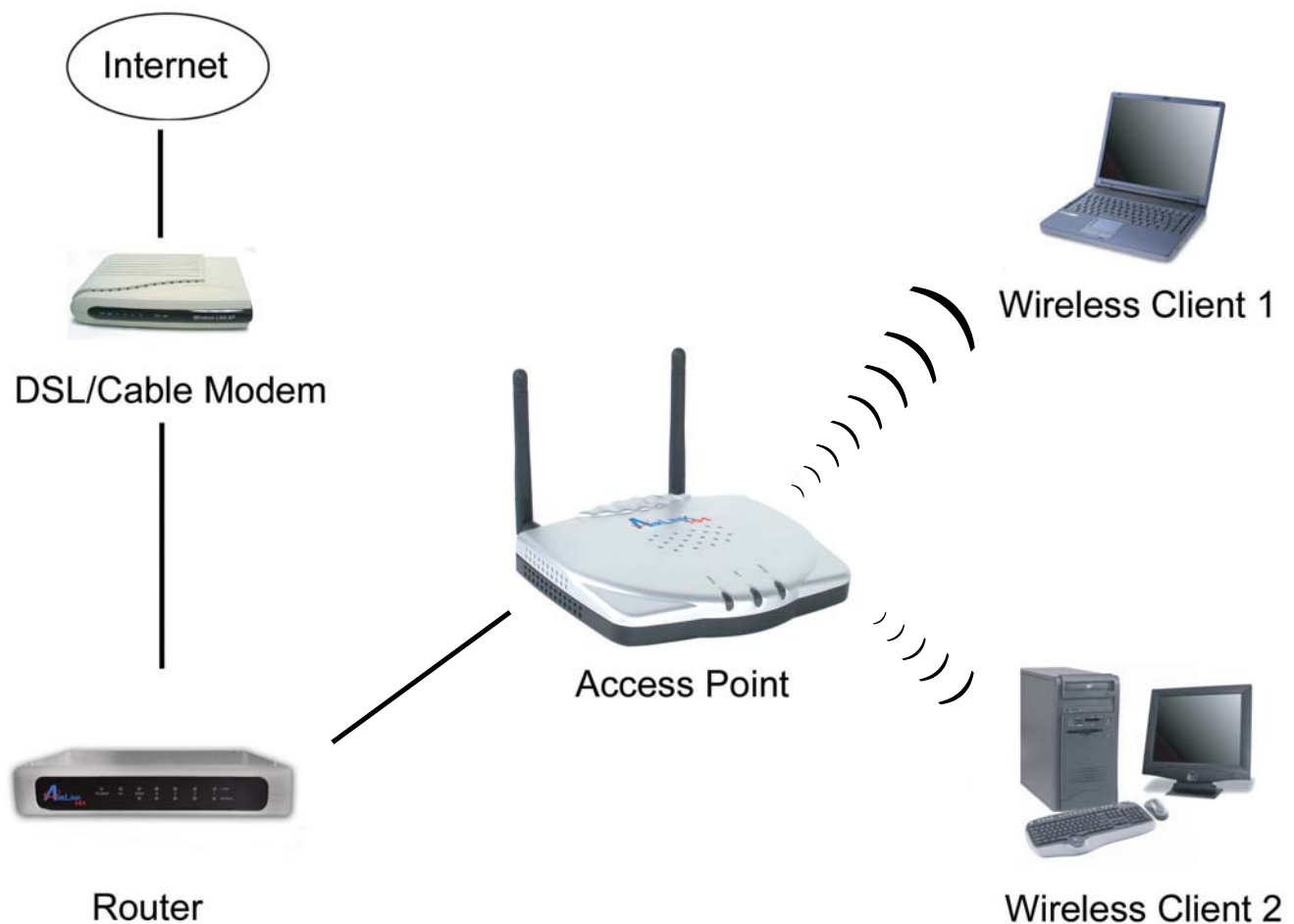
This Quick Installation Guide only provides the basic instructions. For more detailed information, please refer to the user's manual on the supplied CD.

Connecting the Access Point

Step 1 Connect one end of a network cable to the **Ethernet** port of the access point and connect the other end of the cable to the **LAN** port of a router or switch.

Step 2 Power on the access point by connecting one end of the supplied power adapter to the power jack of the access point and connecting the other end to an electrical outlet.

Step 3 Make sure the **Power** and **LAN** lights on the Access point are lit, and the **WLAN** light is blinking. If not, verify the cables are functional and try the above steps again.



Section 2

Establishing Wireless Connection

Below are the default wireless settings of the access point. You must configure your wireless network adapter to the same settings in order to establish a wireless connection with the access point. Please refer to your wireless network adapter's manual for instructions on configuring these settings.

SSID: **default**

Operating Mode: **Infrastructure**

Authentication: **Open System**

Encryption: **disabled**

Restart your computer after establishing a signal strength/link quality with the access point.

Section 3

Configuring the Access Point (Optional)

By default, the Access Point is set to function in **AP Mode**, which connects the wireless clients to the wired part of your network.

Besides the **AP Mode**, there are four other modes you can set the Access Point to function in:

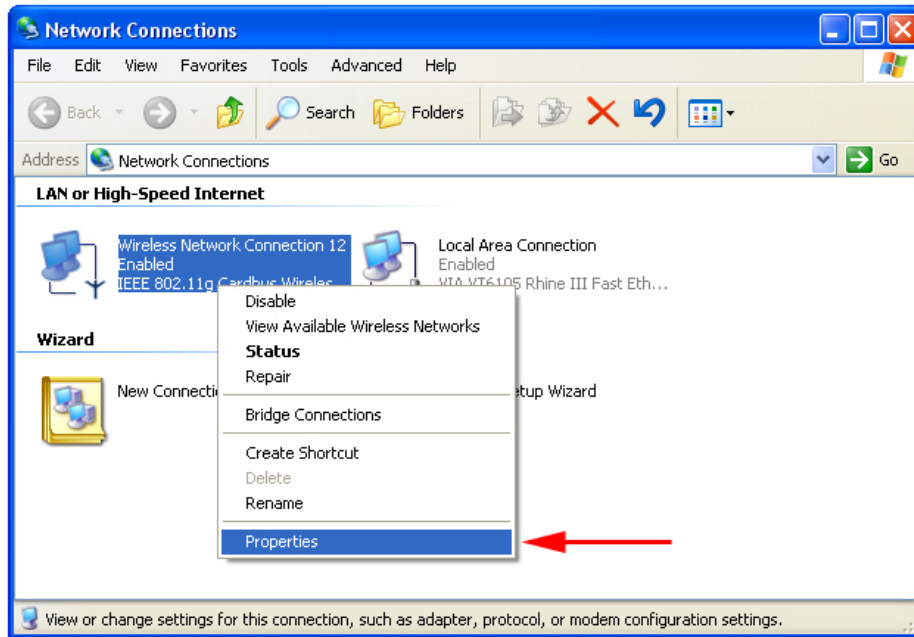
1. **PtP Bridge**: This mode allows you to connect one Access Point to another Access Point of the same model, bridging two wireless LANs together.
2. **PtMP Bridge**: This mode allows you to connect the Access Point with multiple Access Points of the same model, bridging several wireless LANs together.
3. **AP Repeater**: This mode allows you to repeat the wireless signal of another Access Point or Wireless Router, extending the range of the root Access Point or Wireless Router.
4. **AP Client**: This mode transforms the Access Point into a wireless adapter. Any IEEE 802.3 Ethernet device (e.g., a computer, game console, etc.) will be able to communicate wirelessly with the existing wired network via the Access Point set to this mode. You must have another Access Point that's physically connected to the wired or wireless network serving as the root Access Point.

Note: If you need to set the Access Point to any of the four modes listed above, or if you want to enable encryption, you'll need to configure the Access Point through its web configuration utility. For detailed information about how to configure these settings, **please refer to the user's manual included in the provided CD.**

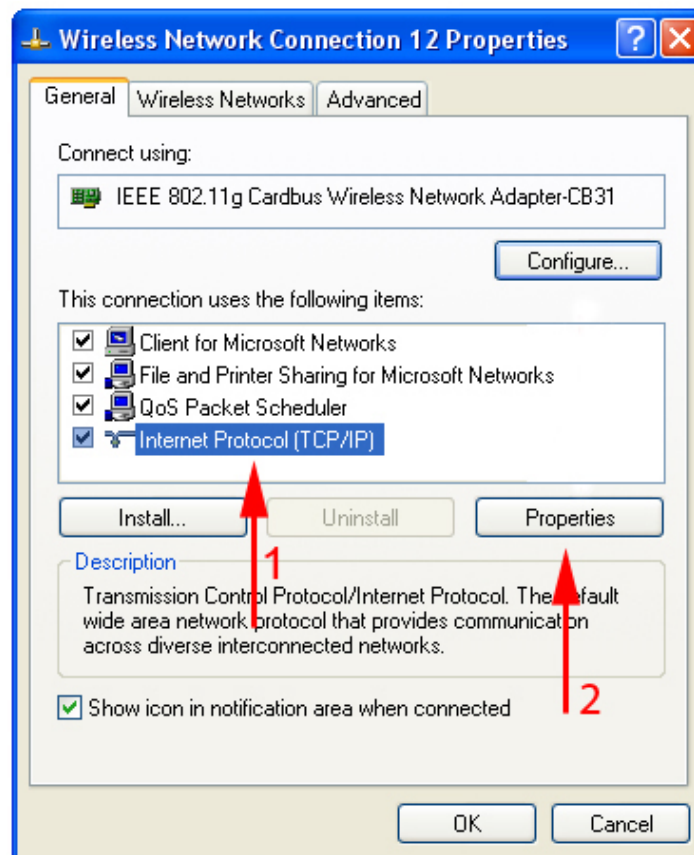
To access the Access Point's web configuration utility, you'll need to assign a static IP address of **10.0.0.x** (where **x** is any number between **2 - 254**) to your computer. Please follow the steps on the next page to assign a static IP address.

Step 1 Right-click on **My Network Places** from your desktop and click on **Properties**. (For Windows 98, right-click on **Network Neighborhood** and click on **Properties**).

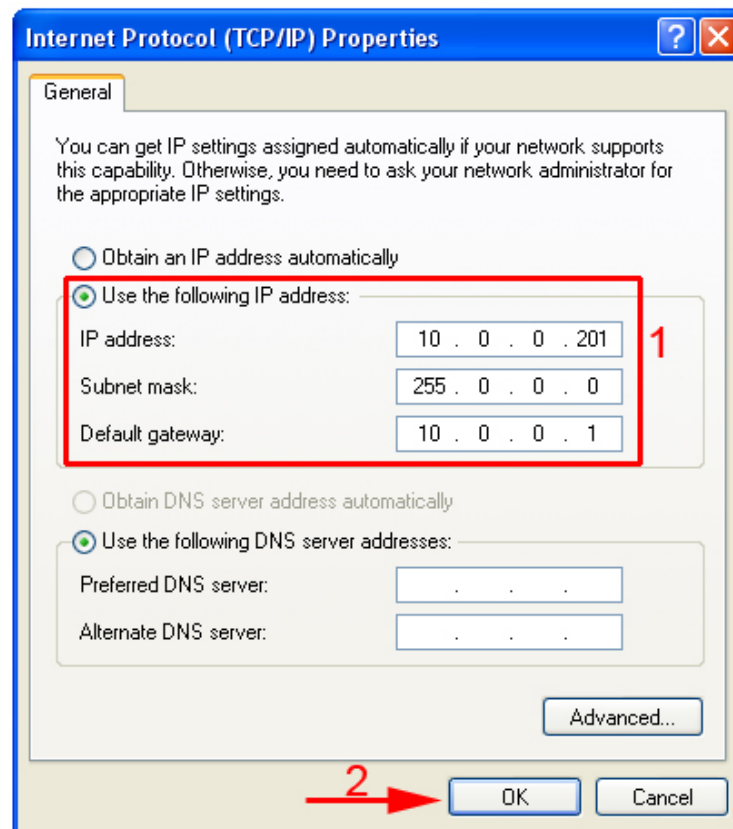
Step 2 Right-click on either **Wireless Network Connection** (if you're using a wireless card to connect to the AP), or **Local Area Connection** (if you're using an Ethernet card to connect to the AP) and click **Properties**.



Step 3 Select **Internet Protocol (TCP/IP)** and click **Properties**.



Step 4 Select **Use the following IP address** and enter an IP address of **10.0.0.x** (where **x** is any number between **2 - 254**). Also enter **255.0.0.0** for the **Subnet mask** and **10.0.0.1** for the **Default gateway** and click **OK**.



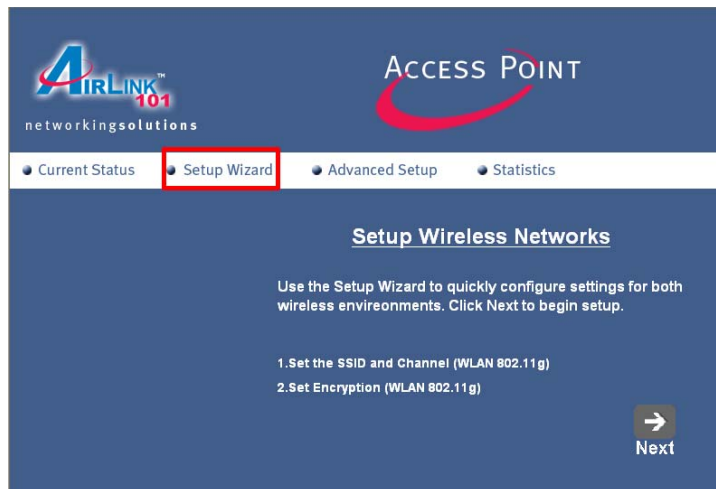
Step 5 Click **Close**.

Step 6 Open the web browser and type in **10.0.0.1** in the address field and press **Enter**.

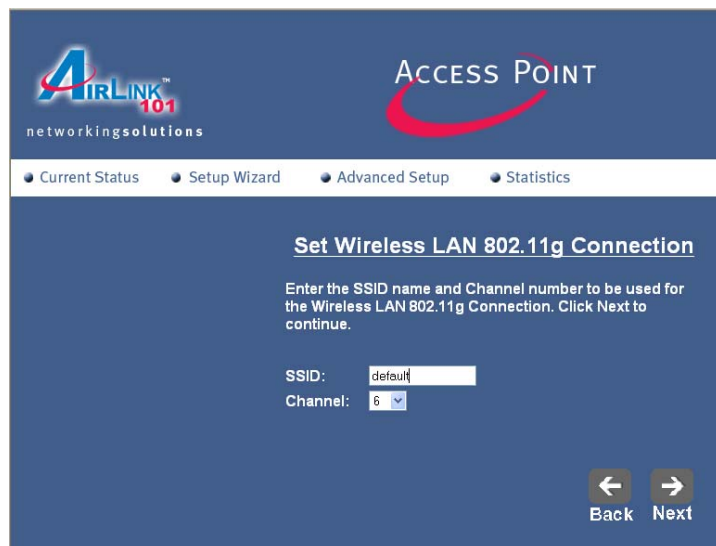
Step 7 At the login screen, enter **admin** for both the user name and password, and click **OK**.



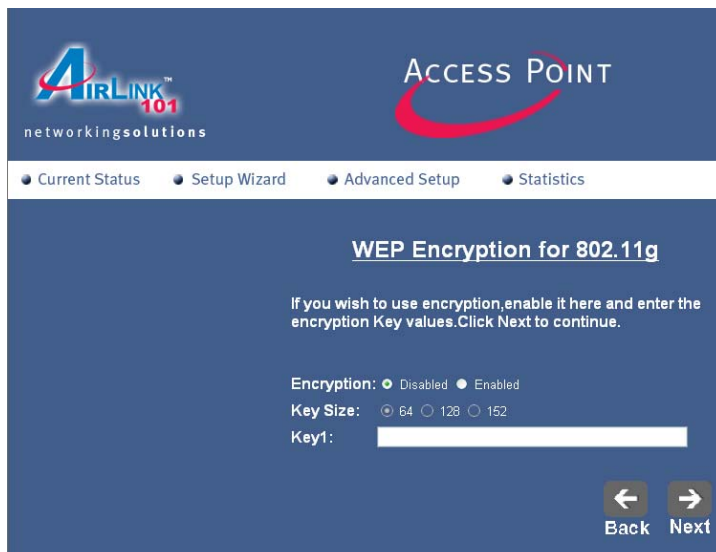
Step 8 To setup **SSID** and **WEP encryption**, click on the **Setup Wizard** link and click **Next**.



Step 9 The default SSID is **default** and the default channel number is **6**. You may enter any SSID and channel number to match your current wireless network. Click **Next**.



Step 10 Select to **enable** or **disable** WEP encryption and click **Next**. If you already have WEP encryption enabled for your existing wireless network, you must enter the identical encryption settings here. Please refer to the User's Manual in the provided CD for details about the WEP settings.



Step 11 Click **Reboot** to save and apply the settings.



Note: Once you have configured the settings, you'll need to change the TCP/IP settings back to dynamic IP. Follow steps 1 - 3 of this section and change the TCP/IP properties back to “**Obtain an IP address automatically**” and “**Obtain DNS server address automatically.**” Restart your computer afterwards.

For further configuration including WPA encryption, please use the **Advanced Setup** link. Refer to the User's Manual for details about these settings.

Section 4

Technical Support

E-mail: support@airlink101.com

Toll Free: 1-888-746-3238

Web Site: www.airlink101.com