



Model # ATVPCI883

Quick Installation Guide

Section 1

Getting Started

Please review the following package contents and minimum system requirements before proceeding to install the Airlink101 TV card. If your computer does not meet the minimum system requirements, the TV card may not work properly.

1.1 Package Contents

The Airlink101 TV Tuner+Capture PCI Card package includes:

- Airlink101 TV Tuner+Capture Card
- *Quick Installation Guide*
- Installation CD-ROM, including Drivers, PVR Software, and DirectX 9.0
- Remote Control [requires two AAA batteries (not included)]
- Remote Sensor
- Audio Cable
- A/V Converter Cable
- FM Radio Antenna

1.2 Minimum System Requirements

- **Pentium III - 1GHz MMX or above CPU**
- **Windows 98SE/ME/2000/XP**
- **One available PCI Slot**
- **256 MB RAM**
- **16 MB VGA card with 800x600 16-bit resolution (DirectX 8.1 or higher)**
- **AC 97 compatible sound card**
- **CD-ROM drive**

Section 2

Installing the TV Card



Note: Be sure to turn off your computer before installing the TV card. Refer to the diagram below as you follow the installation procedures.

Step 1 Insert the **TV card** into an available **PCI slot** on your computer. Secure the bracket of the card to the computer with screws.

Step 2 Connect the **coaxial cable** (TV cable/antenna, *not included*) to the **TV port** of the **TV card**.

Step 3 Connect one end of the **A/V converter cable** to the **A/V port** of the TV card. Connect the **Composite** (or **S-Video input**), and **audio inputs** to the corresponding output cables of your video/audio source.

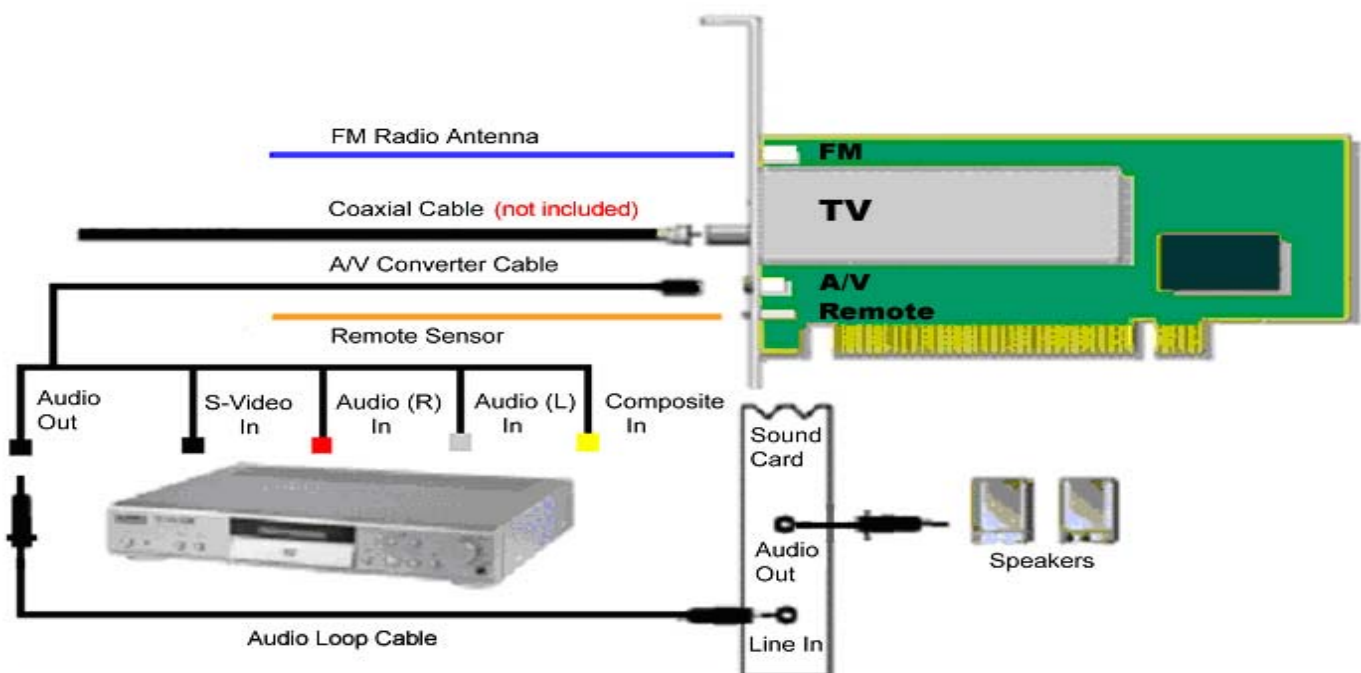
Step 4 Connect one end of the provided **Audio Cable** to the **Audio Out** connector of the **A/V converter cable**, and connect the other end of the **Audio Cable** to the **Line In** port of your sound card.

Step 5 Connect the **FM Radio Antenna** to the **FM port** of the TV card.

Step 6 Connect the **Remote Sensor** to the **Remote port** of the TV card.

Note: Please connect the remote sensor cable to the card before powering ON your PC; otherwise the remote control will not work.

Step 7 Connect your **speakers** to the **Audio Out/Line Out port** of your sound card.



Section 3

Installing the Driver



Note: Before installation, it is highly recommended that: (1) All background programs such as antivirus software and system monitoring programs be disabled first. (2) All other capture devices (e.g. webcam, scanner, digital camera, etc...) should be unplugged prior to installation.

Note: Please have your Win 98/ME CD ready prior to installation.

- * For **Windows 98**, go to **Section 3a**
- * For **Windows ME**, go to **Section 3a**
- * For **Windows 2000**, go to **Section 3b**
- * For **Windows XP**, go to **Section 3b**

Section 3a

Windows 98/ME Driver Installation

Step 1 Insert the provided **Installation CD-ROM**.

Step 2 The setup menu will automatically appear. Select **Driver Install** to start the driver installation.

Note: If the setup menu does not appear automatically, go to **Start, Run,** and type `D:\autorun.exe` (where **D** is the letter of your CD-ROM drive) and click **OK**.



Step 3 Click **Next** to install the driver for the Remote Control.

Step 4 Click **Next** to install the driver for the TV card.

Step 5 Click **Next** to launch the TVSetup utility.

Step 6 Select “**Yes, I want to restart my computer now**” and click **Finish**.

Step 7 After the computer has restarted, you will be prompted to insert the Windows 98SE/ME CD-ROM. Click **OK**.

Step 8 The “New Hardware Found” window prompts. For *Win 98* - type in `D:\Win98\` and for *Win ME* - type in `D:\Win9x\` (Or you may utilize the browse option to locate the directory of your cab driver files). Click **OK**



Note: If a window for “Airlink101 TV88X WDM Drivers Patch” pops up prompting to launch TVSetup if your system is not NTSC, click Cancel.

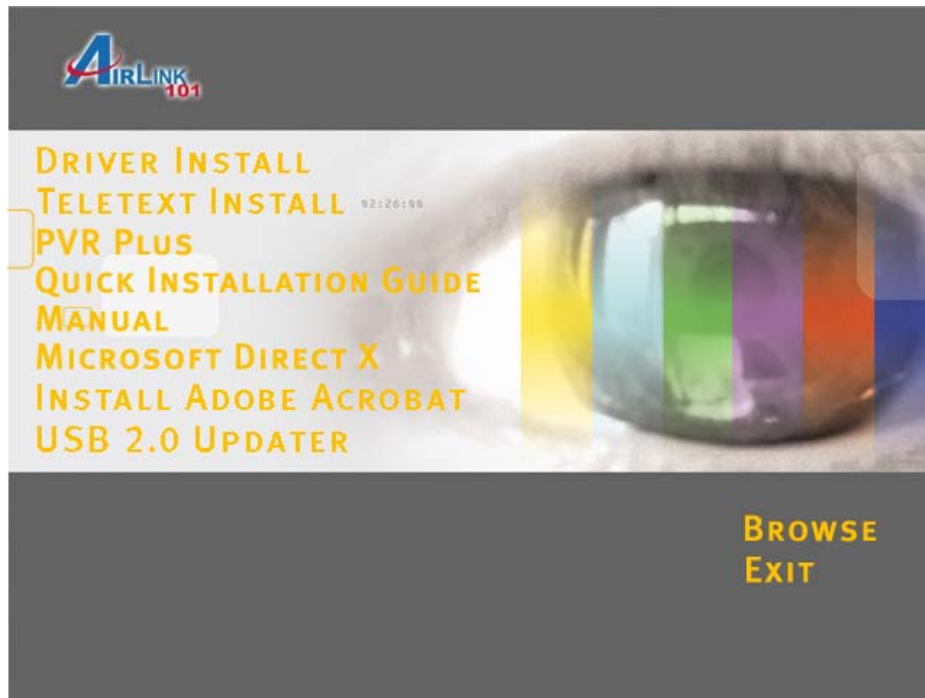
Section 3b

Windows 2000/XP Driver Installation

Step 1 Insert the provided **Installation CD-ROM**.

Step 2 The setup menu will automatically appear. Select **Driver Install** to start the driver installation.

Note: If the setup menu does not appear automatically, go to **Start, Run,** and type `D:\autorun.exe` (where **D** is the letter of your CD-ROM drive) and click **OK**.

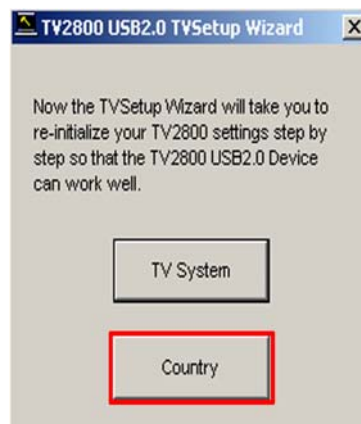


Step 3 Click **Next** to install the driver for the Remote Control.

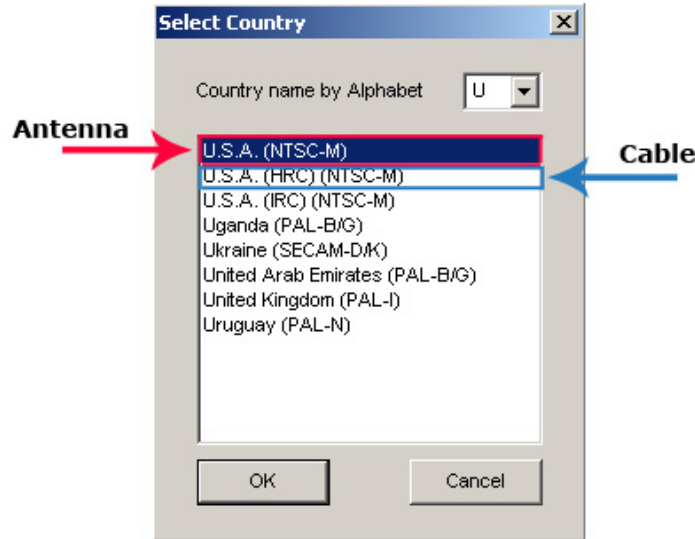
Step 4 Click **Next** to install the driver for the TV card.

Step 5 Click **Next** to launch the TVSetup utility.

Step 6 In the TVSetup Wizard, select **“Country”**.

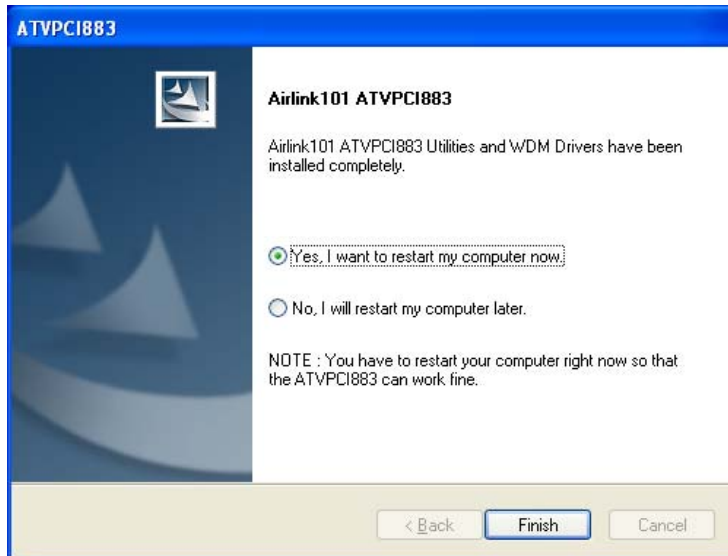


Step 7 Select one of the following for USA:



Step 8 Remove the **Installation CD** from the CD-ROM.

Step 9 Select “**Yes, I want to restart my computer now**” and click **Finish** to restart your computer.



Section 4

Installing PVR-PLUS

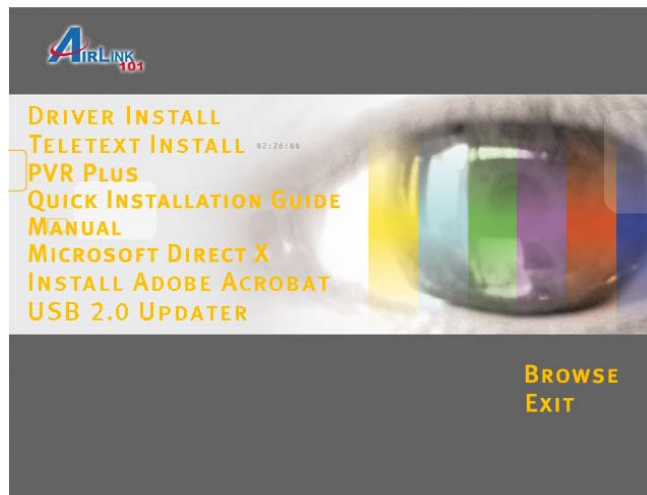
PVR-PLUS is a set of utilities that allow you to watch TV on your computer, edit video clips, burn DVDs, and more.



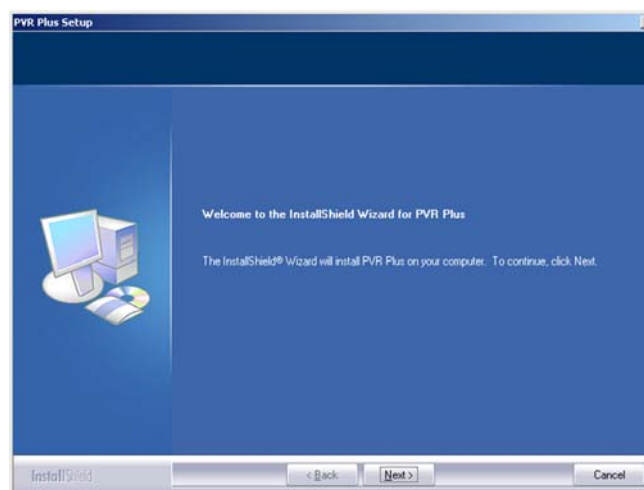
Note for Win 98/ME users: Windows 98/ME will restart after the installation of this software (PVR-PLUS).

Step 1 Insert the **Installation CD**.

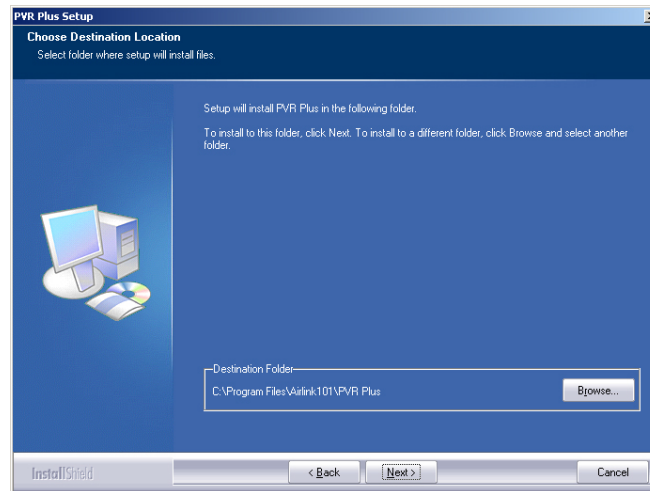
Step 2 Select **PVR-PLUS** at the setup menu. If the setup menu does not appear automatically, go to **Start, Run**, and type `D:\autorun.exe` (where **D** is the letter of your CD-ROM drive) and click **OK**.



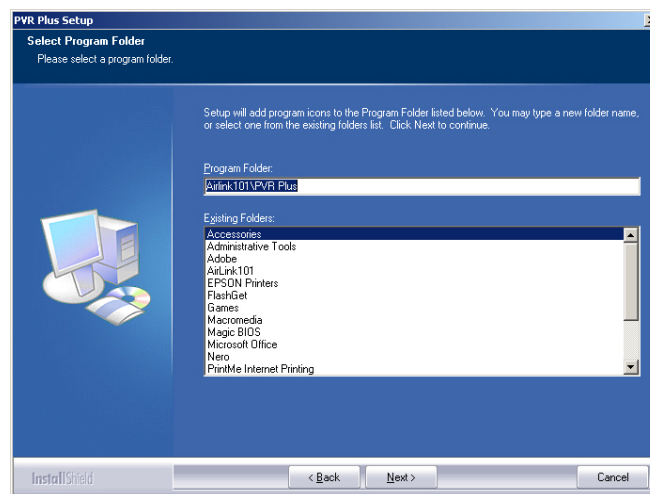
Step 3 Click **Next** to begin installation.



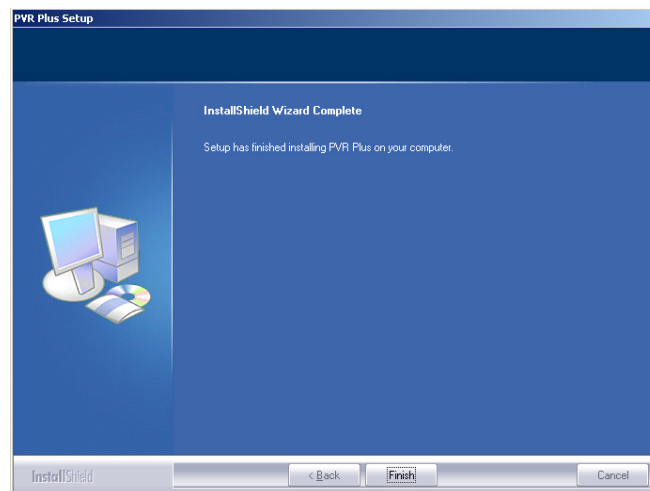
Step 4 Click **Next** to accept the default Destination Location or click **Browse** to choose a new location.



Step 5 Click **Next** to accept the default Program Folder.



Step 6 Click **Finish** to complete the installation.



Section 5

TVR Configuration

TVR is a powerful and easy-to-use TV application that provides feature-rich video/audio entertainment. TVR allows you to watch and record TV or video on your computer and playback the recordings as well. You can also listen to FM radio in the FM mode.



Note: The first time you start TVR, it will run the **TV Frequency Table Setup Wizard**.

Step 1 Double-click the **PVR Plus** icon on your desktop to run **PVR-PLUS** (Or alternatively, click **Start, (All) Programs, Airlink101, ATVPCI883 Utilities, PVR Plus**).

Step 2 Click on the **TVR icon** on the PVR-PLUS console to start TVR.



TVR: TVR turns your PC into a full-featured video recorder.



Video Editor: Video Editor allows you to edit MPEG/DVD videos.

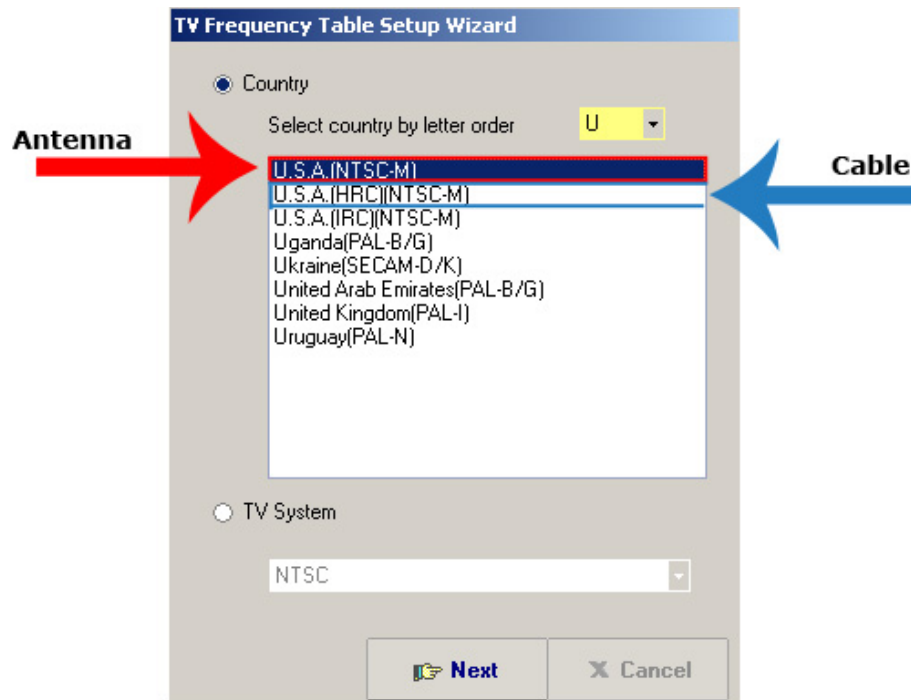


MPEG Encoder: MPEG Encoder converts DV/AVI files into MPEG/DVD for-

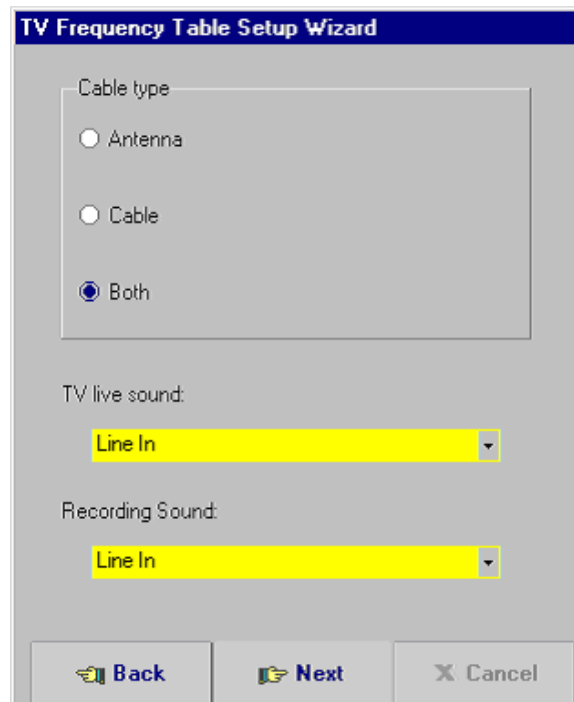


DVD Maker: DVD Maker lets you create VCD, SVCD, and DVD that can be played on a PC or DVD player.

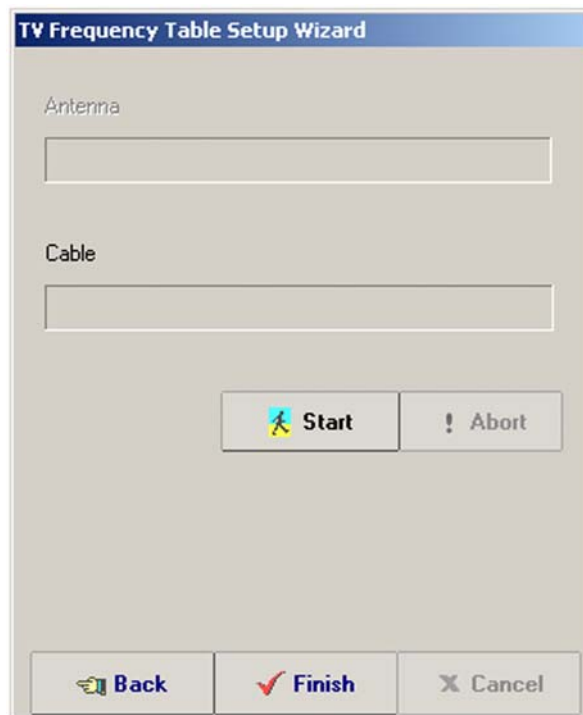
Step 3 Select one of the following TV Systems for USA and click **Next**.



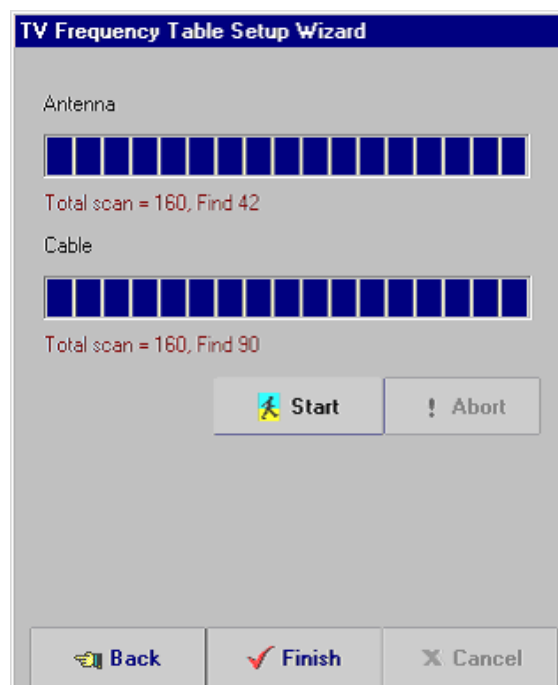
Step 4 Select the **cable type** and **audio source** for your TV and Recording sound and click **Next**. For example, if you connect the provided audio cable to Line In of your sound card, then you would choose Line In as your audio source.



Step 5 Click **Start** to auto-scan for all available channels.



Step 6 Click **Finish** to complete the TV Frequency Table Setup Wizard.



Step 7 Select your **video source** (Antenna, Cable, Composite, S-Video, or Memory) by clicking on the **Input Source Switch**.

Input Source Switch



Step 8 Click on the numeric keys or the up and down arrows to change your channels.

Congratulations! You have successfully configured the TVR program. You can enjoy watching TV on your computer now. For more detailed information on how to use TVR and other applications, please refer to the User's Manual in the provided Installation CD.

Section 6

Technical Support

E-mail: support@airlink101.com

Toll Free: 1-888-746-3238

Web Site: www.airlink101.com