



Quick Installation Guide

Airlink101 802.11g Cardbus Adapter

Model # AWLC3026



Package Content:

- Cardbus Adapter
- Driver & Utility CD
- Quick Installation Guide

Section 1

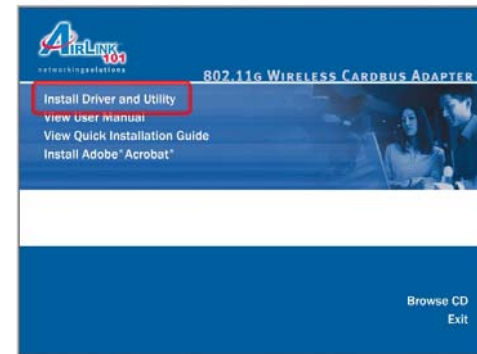
Installing the Driver and Utility Software

This Quick Installation Guide only provides the basic instructions. For more advanced features such as configuring encryption settings, please refer to the User's Manual in the provided CD.

Note: Do not insert the Cardbus Adapter until you have reached the appointed step.

For Windows 98SE and ME users, you may be prompted to insert the Windows 98SE or ME CD during the driver installation. Be sure to have your Windows 98SE or ME CD ready.

Ver. 1A **Step 1** Insert the Driver & Utility CD into your CD drive and select **Install Driver and Utility** from the menu.

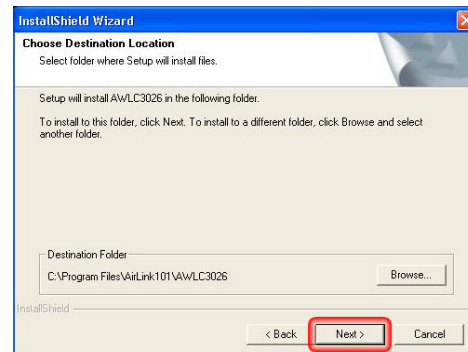


Note: If the Autorun screen doesn't appear automatically go to **Start, Run,** and type **D:\autorun.exe** (where **D** is the letter of your CD drive) and click **OK**.

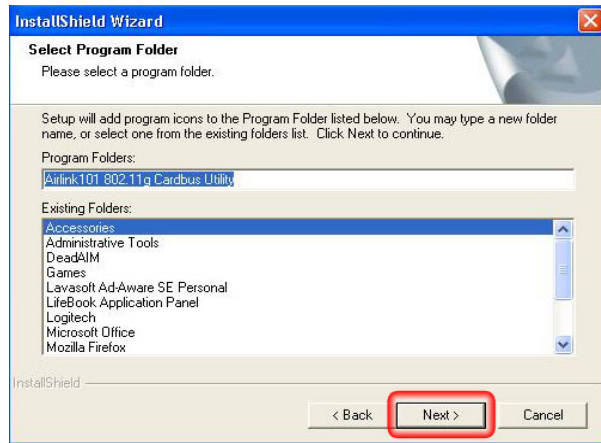
Step 2 Click **Next** at the welcome screen.



Step 3 Click **Next** to accept the default destination folder.



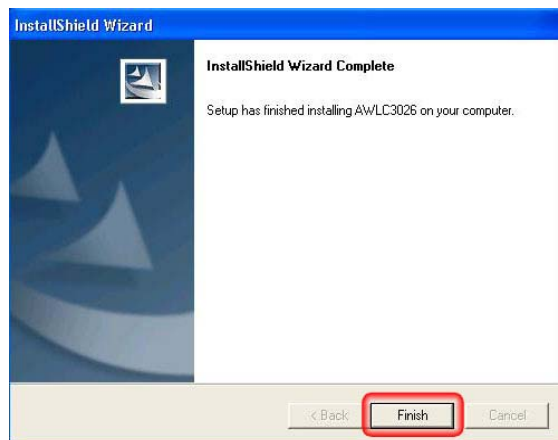
Step 4 Click **Next** to accept the default Program Folder.



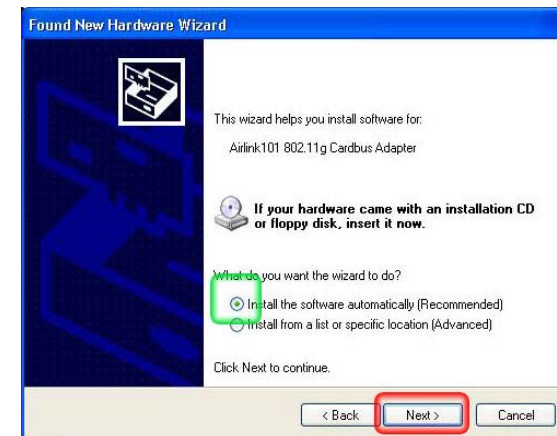
Step 7 Once the Found New Hardware Wizard appears, select **No**, not this time and click **Next**.



Step 5 Click **Finish** to complete Driver installation for the adapter.



Step 8 Select **Install the software automatically** and click **Next** to continue



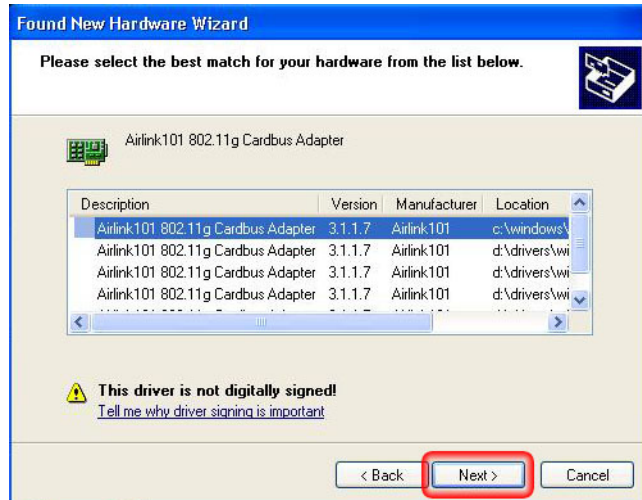
For Windows 98SE and ME, select **Search for the best driver for your device** and click **Next**. Verify all the check boxes are checked and click **Next**.

Step 6 After your computer is restarted, insert the Cardbus Adapter.

Section 2

Setting Up the Cardbus Adapter

Step 9 Make sure the first driver in the list is highlighted and click **Next**.

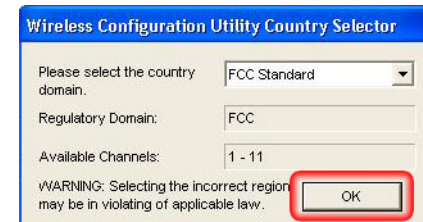


Step 10 Click **Continue Anyway** at the Windows Logo Screen.
(For Windows 2000, click **Yes** at the Digital Signature Not Found prompt).

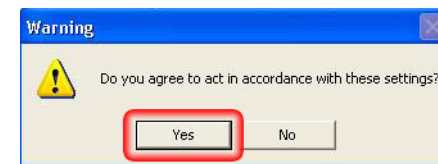


Step 9 Click **Finish**. (Restart the computer for Windows 98SE and ME).

Step 1 After you have completed Driver and Utility Installation, the Wireless Configuration Utility Country Selector will appear. Select your country domain and press **OK**.



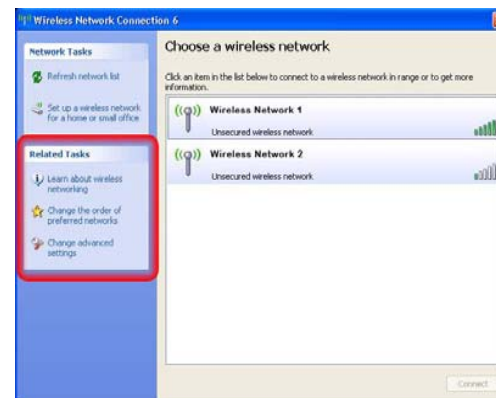
Step 2 Click **Yes** to confirm your selection.



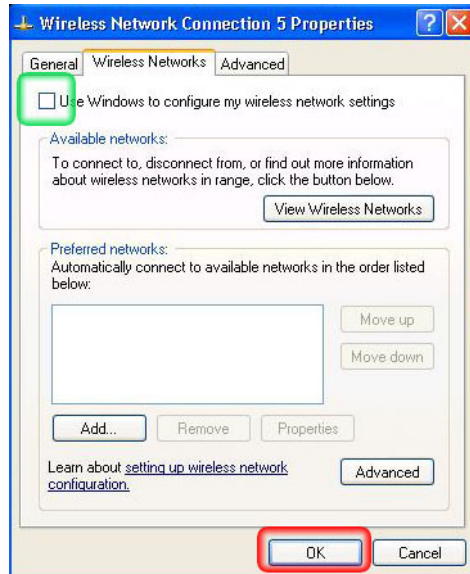
Step 3a (Windows XP Only) In order to properly use the Wireless Utility, you must first disable the Windows Wireless configuration tool. Double click on the Windows Wireless icon in the system tray to open the Wireless Network Window.



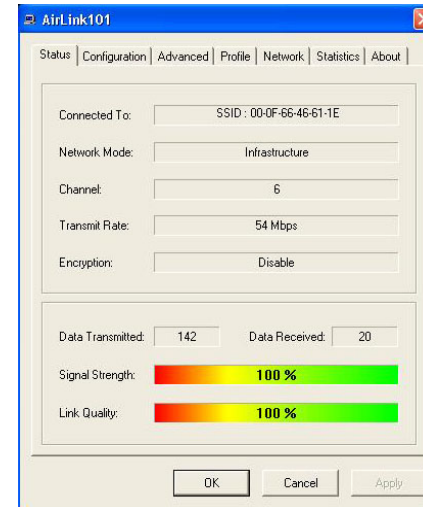
Step 3b (Windows XP Only) On the left hand side of the window, find the box that says **Related Tasks** and click on **Change advanced settings**.



Step 3c (Windows XP Only) Select the [Wireless Networks] tab and make sure you *uncheck* the box next to **Use Windows to configure my wireless network settings**. Click **OK** to finish.



Step 2 The Wireless Utility will now appear and begin to scanning for any available wireless networks in its range. Once it connects to a wireless network, the SSID will display on the top of the window and the Signal Strength and Link Quality will appear at the bottom.



Congratulations! You have now successfully completed installation for your Airlink101 Wireless Cardbus Adapter. You can navigate the various options for your Wireless adapter by selecting different tabs located on the top of the window.

For further information on configuring your Wireless adapter including enabling encryption, please refer to the User's Manual.

Section 3

Configuring the Cardbus Adapter

Step 1 There are two ways to open the Wireless Utility function.

1. Click **Start > Programs > Airlink101 802.11g Cardbus Utility**
OR
2. Double-click on the **Airlink101 Wireless Icon** located in the system tray



Section 4

Technical Support

E-mail: support@airlink101.com

Toll Free: 1-888-746-3238

Web Site: www.airlink101.com

*Theoretical maximum wireless signal rate based on IEEE standard 802.11g specifications. Actual data throughput will vary. Network conditions and environmental factors, including volume of network traffic, building materials and construction, mix of wireless products used, radio frequency interference (e.g., cordless telephones and microwaves) as well as network overhead lower actual data throughput rate.

Copyright © 2005 AirLink101. All rights reserved. AirLink101, the stylized AirLink101 logo, specific product designations, and all other words and logos that are identified as trademarks and/or service marks are, unless noted otherwise, the trademarks and service marks of AirLink101. All other product or service names are the property of their respective holders. AirLink101 products are protected under numerous U.S. and foreign patents and pending applications, mask work rights, and copyrights.