



Quick Installation Guide

802.11g CardBus Adapter

Model # AWLC3026T



Package Content:

- Cardbus Adapter
- Driver & Utility CD
- Quick Installation Guide

Section 1

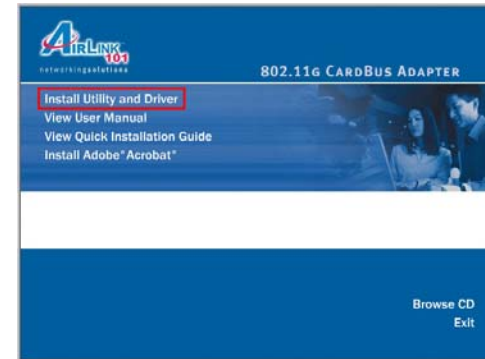
Install Utility and Driver

This Quick Installation Guide only provides the basic instructions. For more advanced features, please refer to the User's Manual in the provided CD.

Note: Do not insert the Cardbus Adapter until you have reached the appointed step.

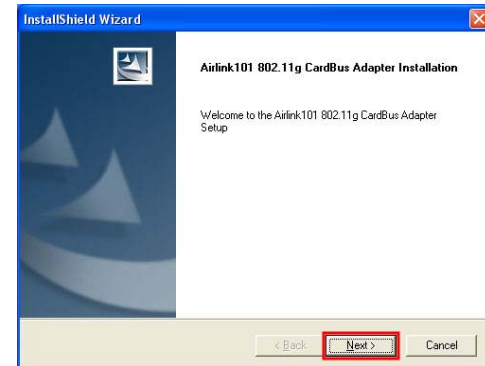
For Windows 98SE and ME users, you may be prompted to insert the Windows 98SE or ME CD during the driver installation. Be sure to have your Windows 98SE or ME CD ready.

Ver. 1A **Step 1** Insert the Driver & Utility CD into your CD drive and select **Install Utility and Driver** from the menu.

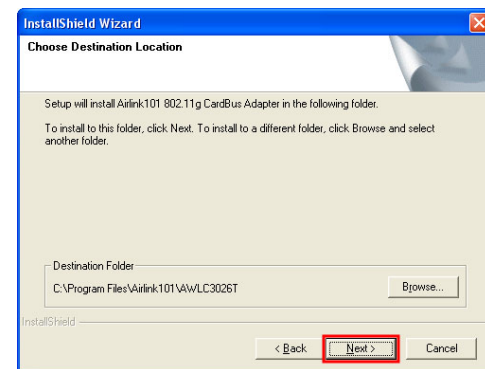


Note: If the Autorun screen doesn't appear automatically go to **Start, Run,** and type **D:\autorun.exe** (where **D** is the letter of your CD drive) and click **OK**.

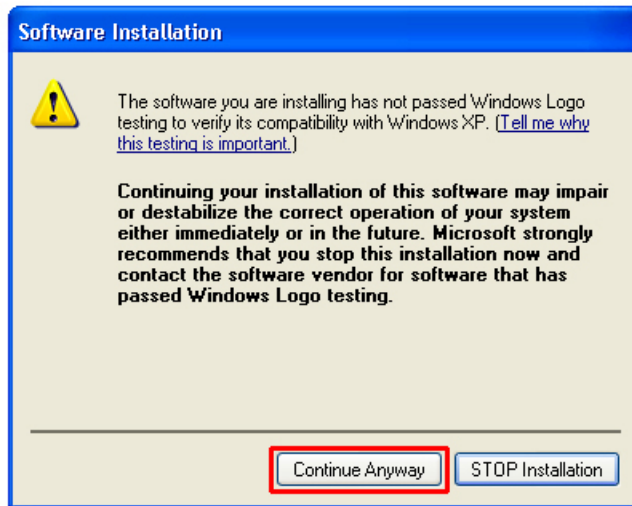
Step 2 Click **Next** at the welcome screen.



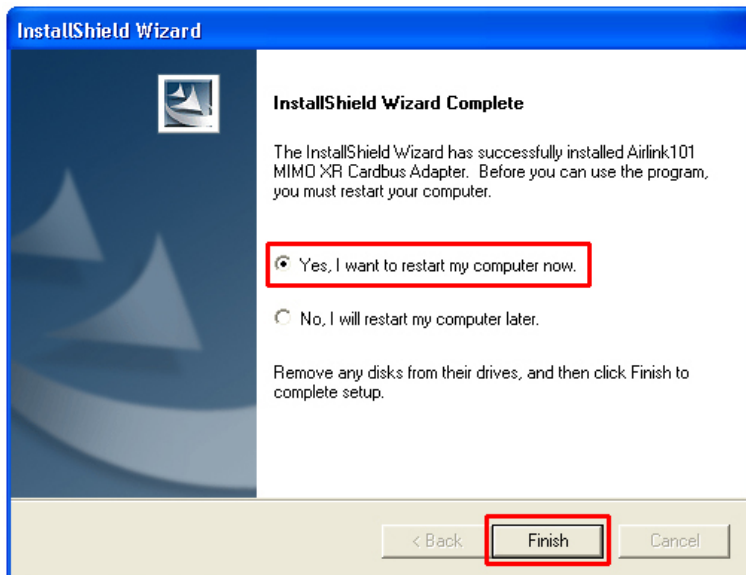
Step 3 Click **Next** to accept the default destination folder.



Step 4 Click **Continue Anyway** at the Windows Logo Screen.
(For Windows 2000, click **Yes** at the Digital Signature Not Found prompt).

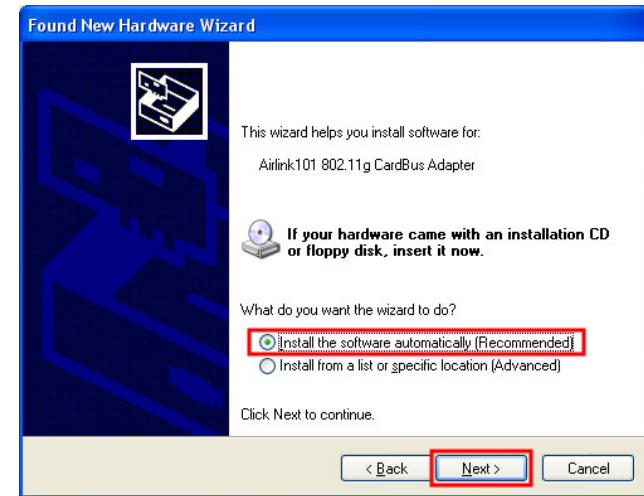


Step 5 Verify **Yes, I want to restart my computer now** is selected and click **Finish** to restart your computer.



Step 6 After your computer is restarted, insert the Cardbus Adapter.

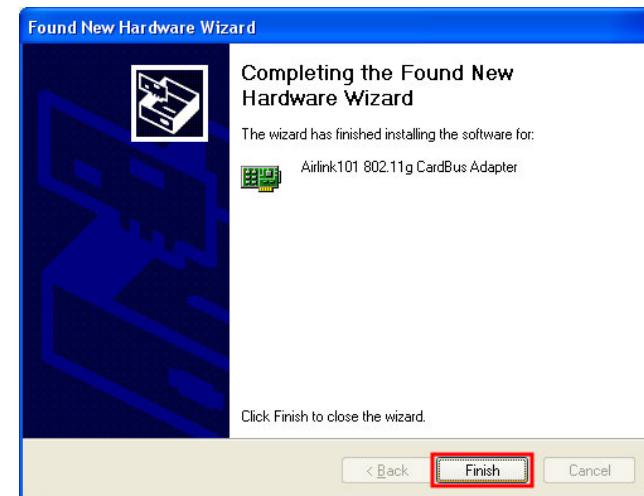
Step 7 Select **Install the software automatically** and click **Next**.



For Windows 98SE and ME, select **Search for the best driver for your device** and click **Next**. Verify all the check boxes are checked and click **Next**.

Step 8 Click **Continue Anyway** at the Windows Logo Screen.
(For Windows 2000, click **Yes** at the Digital Signature Not Found prompt).

Step 9 Click **Finish**. (Restart the computer for Windows 98SE and ME).



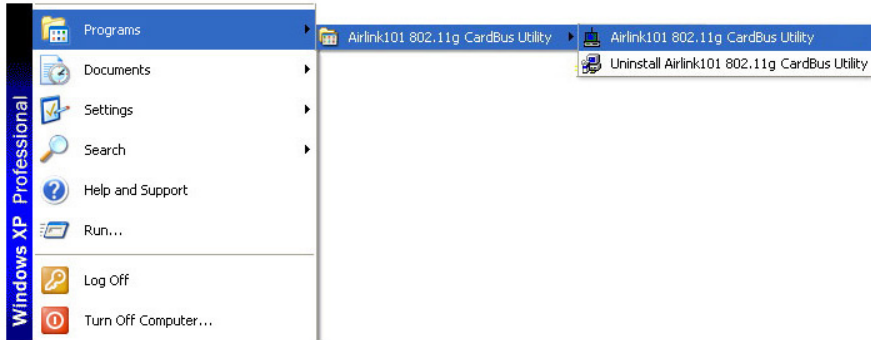
Continue on Back



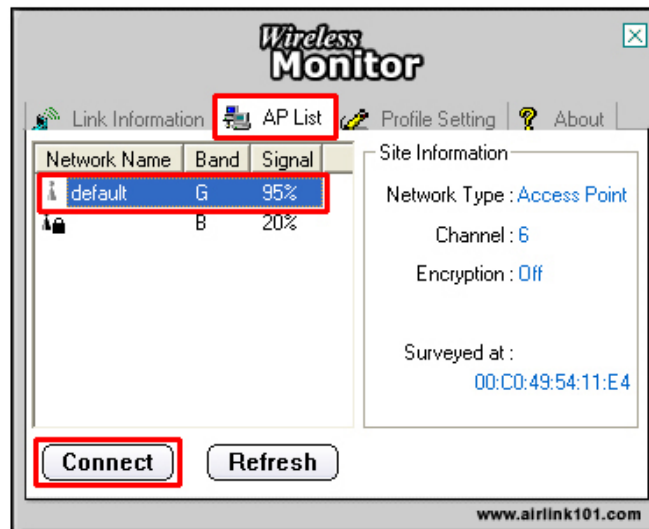
Section 2

Configure the Cardbus Adapter

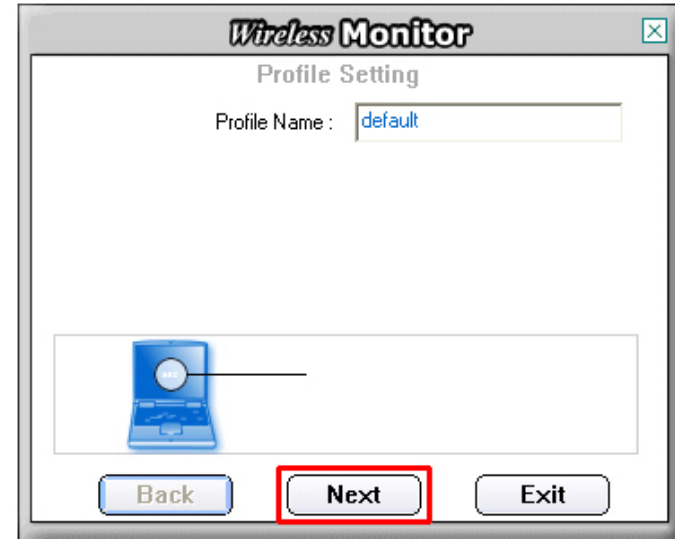
To open the Cardbus Adapter's utility go to **Start > (All) Programs > Airlink101 802.11g CardBus Utility > Airlink101 802.11g CardBus Utility**.



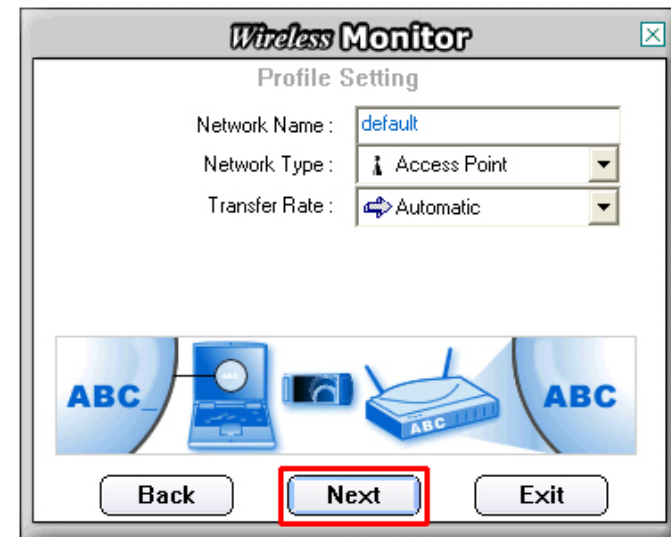
Step 1 Go to the **AP List** tab, select the **SSID** (Network Name) of the wireless network you wish to connect to, and click **Connect**.



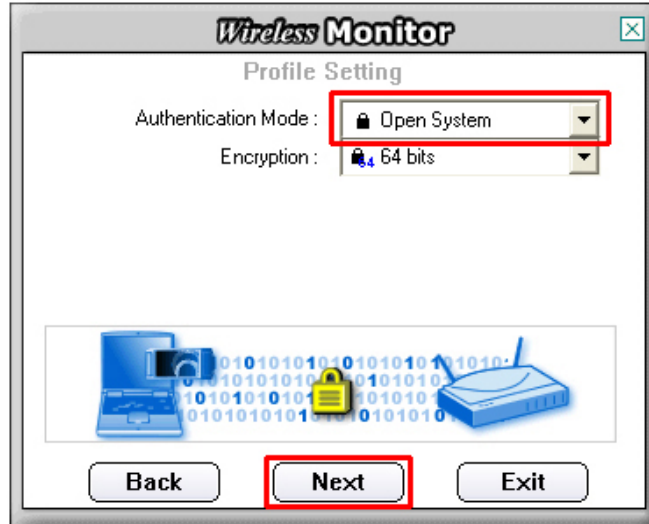
Step 2 If encryption is not enabled for the selected access point / router, skip to step 6. Otherwise, enter a **Profile Name** for your wireless setting and click **Next**.



Step 3 Verify that the **Network Name** matches the **SSID** of your wireless network and click **Next**.

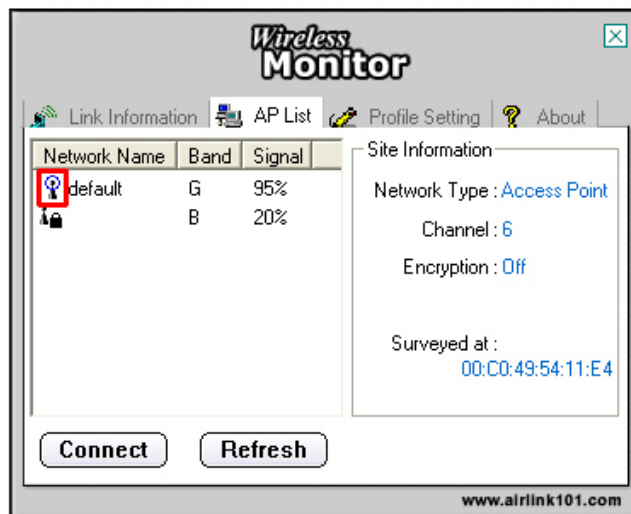


Step 4 Select the proper encryption setting for your wireless router or access point from the drop-down menu and click **Next**.



Step 5 Follow the on-screen instructions to complete the encryption settings. Click **Complete** when finished.

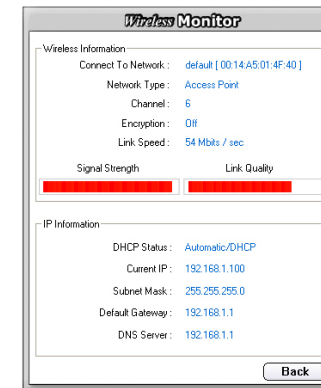
Step 6 You should see a blue circle around the antenna icon indicating a valid connection.



Step 7 Go to the **Link Information** tab and click on the **More** button.



Step 8 Verify that you are receiving adequate Signal Strength and Link Quality and that you have been assigned a valid IP address (instead of all 0's). If all 0's, please repeat step 1 - 5.



Section 3

Technical Support

E-mail: support@airlink101.com

Toll Free: 1-888-746-3238

Web Site: www.airlink101.com

*Theoretical maximum wireless signal rate based on IEEE standard 802.11g specifications. Actual data throughput will vary. Network conditions and environmental factors, including volume of network traffic, building materials and construction, mix of wireless products used, radio frequency interference (e.g., cordless telephones and microwaves) as well as network overhead lower actual data throughput rate.

Copyright © 2005 AirLink101. All rights reserved. AirLink101, the stylized AirLink101 logo, specific product designations, and all other words and logos that are identified as trademarks and/or service marks are, unless noted otherwise, the trademarks and service marks of AirLink101. All other product or service names are the property of their respective holders. AirLink101 products are protected under numerous U.S. and foreign patents and pending applications, mask work rights, and copyrights.