



Turbo 85 Mbps Powerline Ethernet Adapter

Model # APL8512

User's Manual

Ver. 1A

Table of Contents

1. Introduction.....	3
1.1 Package Contents	3
1.2 Features	3
2. Installing Adapters	4
3. Installing Security Software.....	5
4. Using the Powerline Security Software	7
4.1 Main Tab.....	7
4.2 Encryption Tab.....	10
4.3 Diagnostics Tab	11
4.4 About Tab	12
5. Specifications.....	13
Technical Support.....	14

1. Introduction

Thank you for purchasing the Turbo 85 Mbps Powerline Ethernet Adapter. This adapter transforms your home's powerline into an instant home network, allowing you to easily share high-speed Internet access, online gaming, videos and much more within seconds. Just follow the quick and easy steps in this guide to setup your home network.

1.1 Package Contents

Before you begin the installation, please check the items of your package. The package should include the following items:

- Powerline Ethernet Adapter
- Network Cable
- Utility CD
- Quick Installation Guide

1.2 Features

- HomePlug 1.0 compliant
- Operates on existing Home Electricity in cross circuit (works under a single power meter)
- 100% Plug-and-Play, no configuration or software setup required
- Data transmission rate up to 85Mbps
- Built-in QoS and Error Correction features
- 56-bit DES Hardware Encryption with Key management for secure power-line communications
- Compliant with IEEE 802.3/802.u
- 10/100mbps auto-sensing LAN port
- Includes user-friendly software for setting up security

2. Installing Adapters

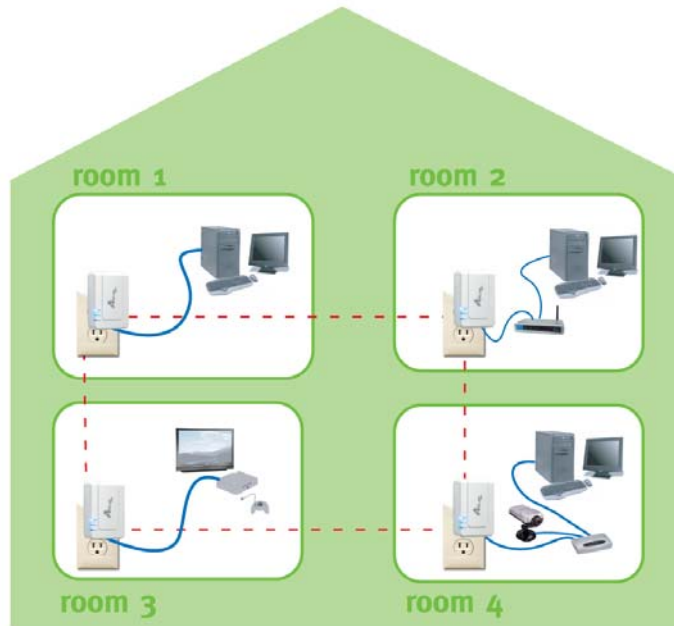
For sharing Broadband Internet connection throughout your home, connect one end of the supplied network cable to the router's **LAN** port and connect the other end to the Powerline Adapter. Plug the Powerline Adapter into an electrical outlet.



If you already have another powerline adapter connected to the router, connect one end of the supplied network cable to your PC, gaming console, or other network device and connect the other end to the Powerline Adapter. Plug the Powerline Adapter into an electrical outlet.



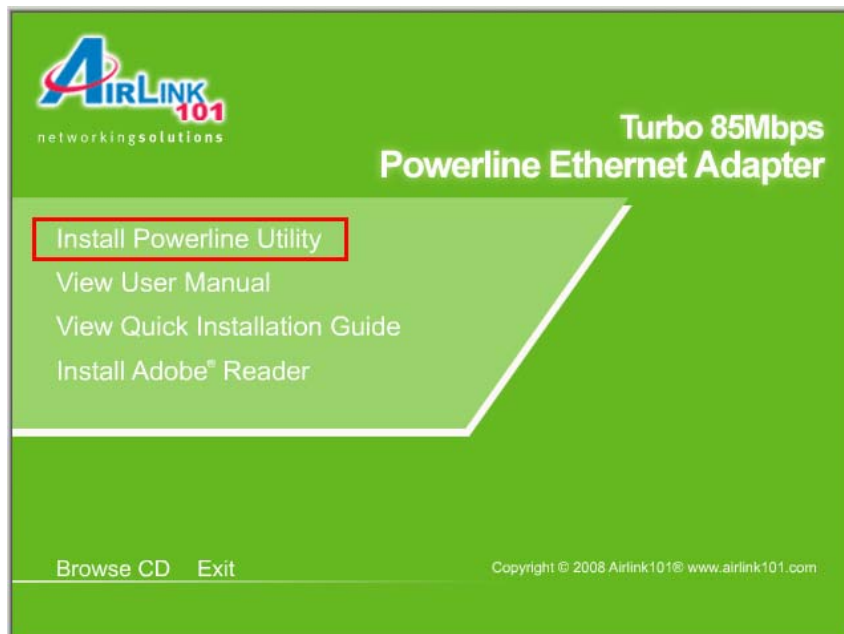
Your home network is ready for use! For maximum performance and compatibility, use additional AirLink101® Powerline Adapters as needed.



3. Installing Security Software

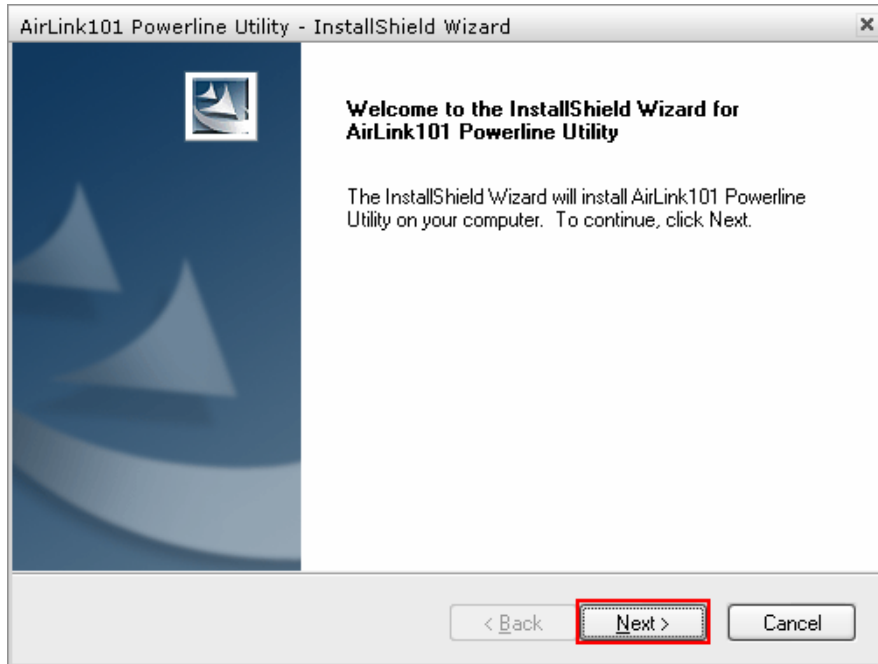
The Powerline Adapter includes an optional security software you can install to protect your home network against eavesdroppers and hackers. Follow the instructions in this section to install the security software.

Step 1 Insert the provided CD into your CD drive and select **Install Powerline Utility** from the menu.

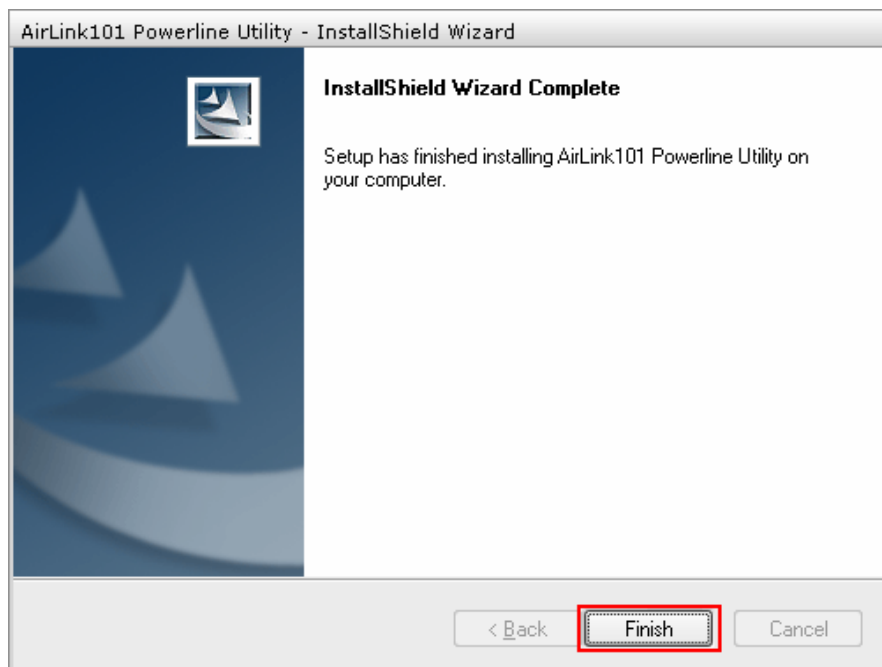


Note: If the Autorun screen doesn't appear automatically go to **Start, Run,** and type **D:\Utility\Setup.exe** (where **D** is the letter of your CD drive) and click **OK**.

Step 2 Click **Next** at the welcome screen and all of the screens that follow. Do not change any options.



Step 3 Click **Finish** once you get to Wizard Complete screen.



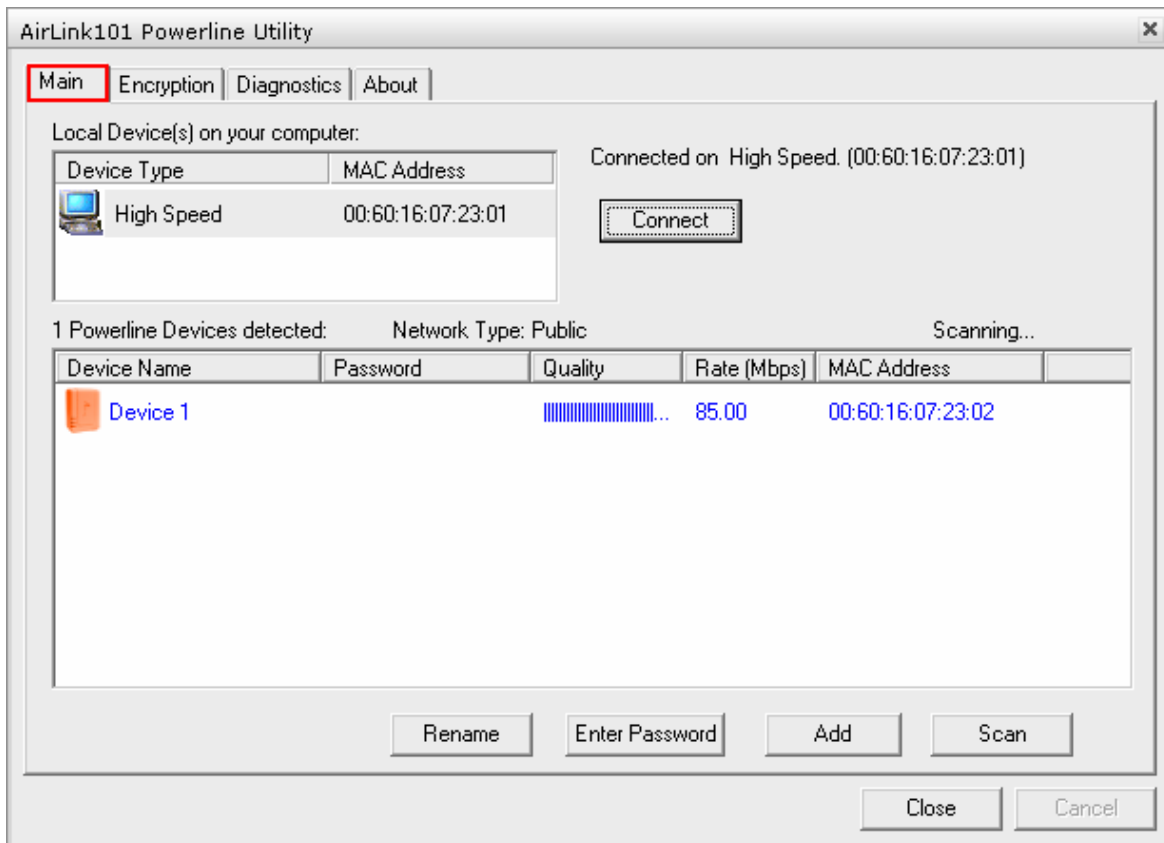
4. Using the Powerline Security Software



Double-click on the PowerLine Icon on your desktop to start the software.

4.1 Main Tab

The Main Tab displays your local powerline adapter as well as other remote adapters detected by the software.



The Local Device is the powerline adapter connected directly to your computer. All other powerline adapters are listed under the Powerline Devices list.

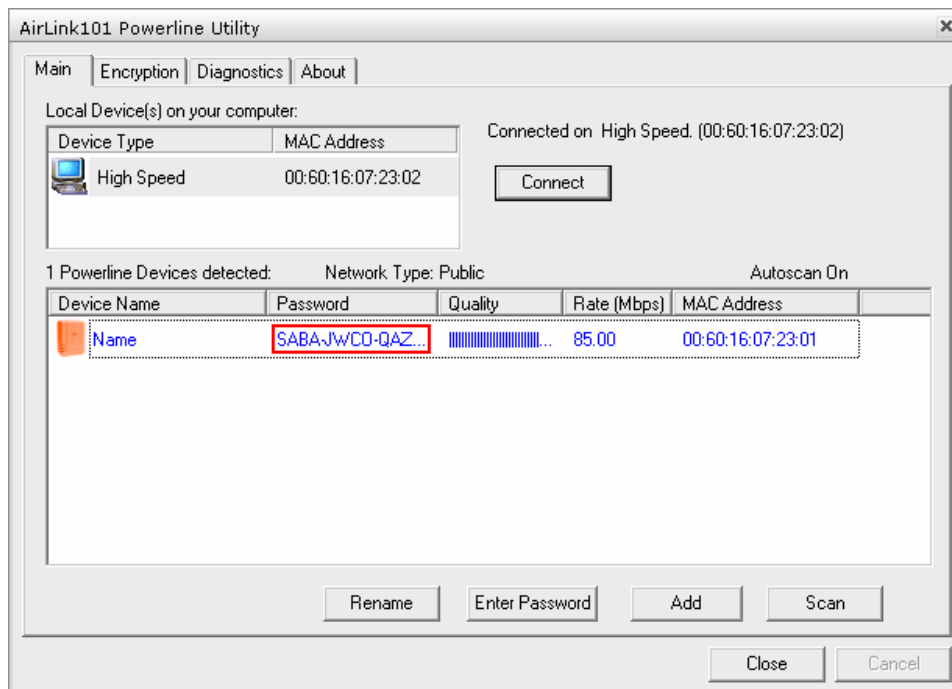
Rename: To rename a device, select the desired adapter from the list and click on the **Rename** button.

Enter Password: In order to configure another adapter remotely, you'll need to enter its physical password first. Select the desired adapter from the list and click on the **Enter Password** button.



The adapter's password is printed on the back label.

Once the password is successfully entered, it will appear in the device list.



Add: To manually add an adapter to the device list, click on the **Add** button.



Enter the Device Name and its password and click **OK**.

The newly added adapter will appear in the device list.

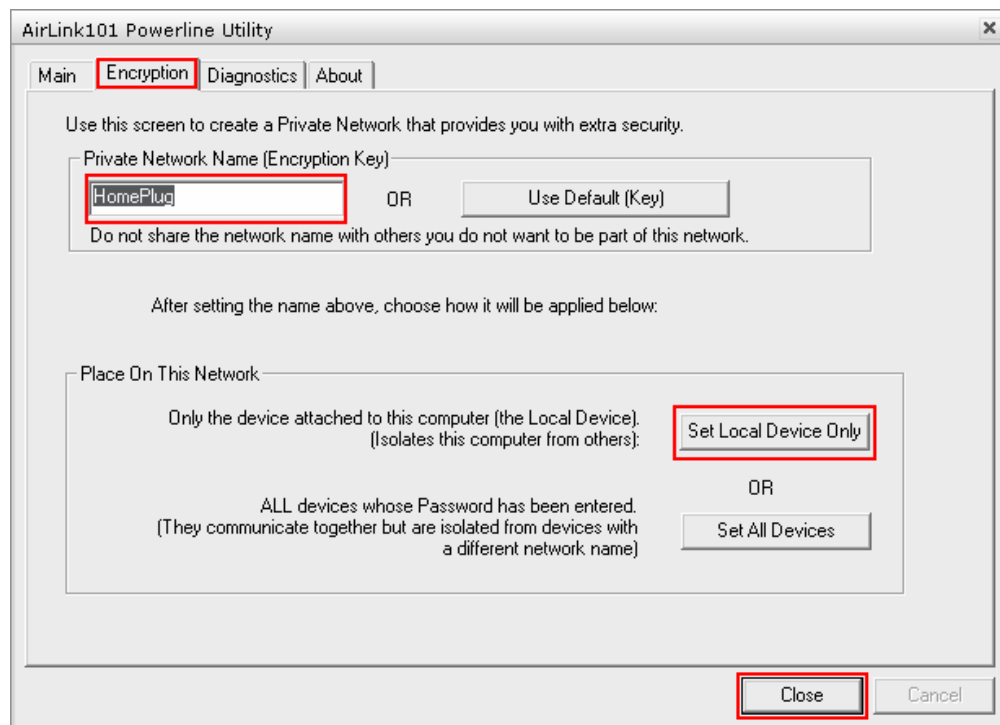
Scan: Click on the **Scan** button to scan for all available powerline adapters.

4.2 Encryption Tab

The Encryption tab allows you to setup security encryption for your network. You need to connect the adapter directly to your computer to configure the encryption setting. All adapters in your home must use the same Encryption Key.

Step 1 With the adapter plugged into the electrical outlet, connect the adapter directly to your computer and go to the **Encryption tab**.

Step 2 Enter a password in the Encryption Key field.



Step 3 Click on the **Set Local Device Only** button and click **Close**.

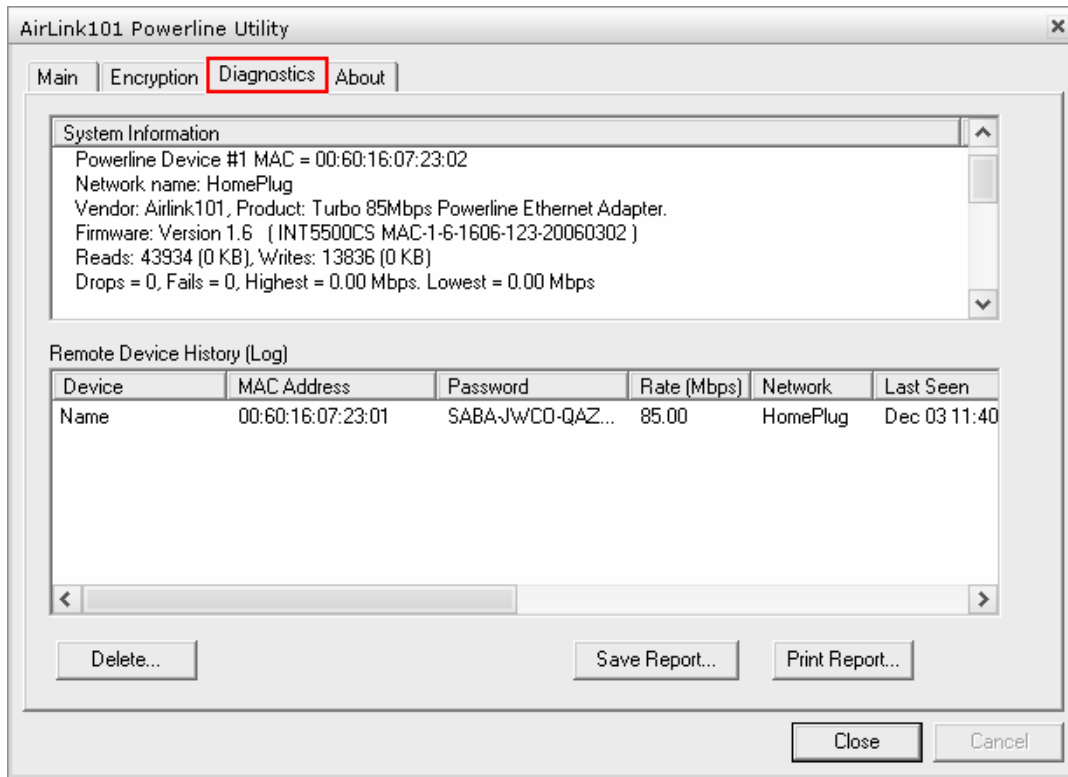
Step 4 Repeat steps 1 – 3 for all of the powerline adapters in your home. All the adapters must use the same Encryption Key.

Note: If you have already entered the physical passwords for all of the adapters in your home as described in the previous section, you can remotely set the encryption key for all the adapters by entering the **Encryption Key** and clicking on the **Set All Devices** button.

To check if your network is secured, go to the **Main tab** and verify that the Network Type is **Private**.

4.3 Diagnostics Tab

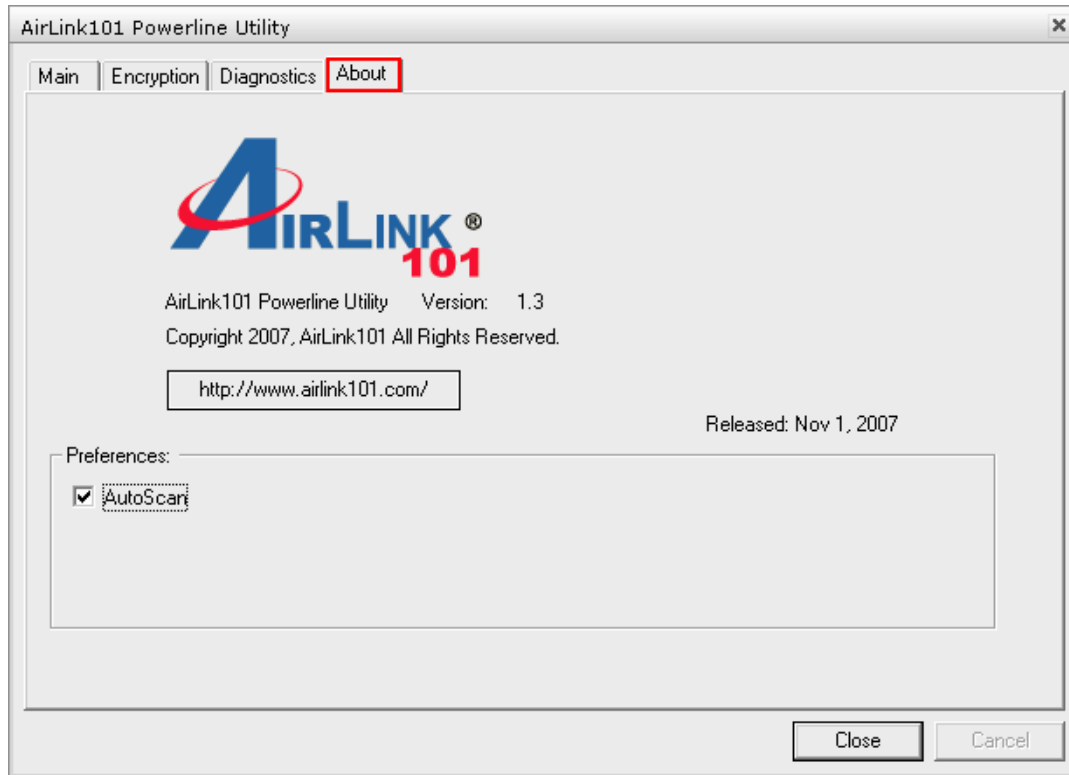
The Diagnostics tab displays information about all the powerline adapters in your home.



To generate a text report, click on the **Text Report** button. You can also save or print the report by clicking on the respective buttons.

4.4 About Tab

The About tab displays the version number of the Powerline Security Software.



If you wish to disable Auto-scanning of powerline adapters upon startup, uncheck the AutoScan check box.

5. Specifications

Connectivity

- Data rate up to 85Mbps
- 10/100 auto sensing for Ethernet port

Powerline

- HomePlug v1.0 compliant
- 56-Bit DES Hardware Encryption
- Intellon chipset
- Compliant with IEEE 802.3/802.3u

Software Utility

- Security control
- Monitoring tool

Software Requirements (optional)

- Windows ME, 2000, XP, Vista

Power

- Standard AC Power Jack

LEDs

- PWR: power on/off
- LAN: Link/activity for Ethernet
- PL: Link/activity for Powerline

Weight

- 172 g

Dimensions

- 97 x 64 x 40 mm

Temperature

- Operating: 0°~ 40°C
- Storage: 20°~ 65° C

Humidity

- Operating: 10~85% (non-condensing)
- Storage: 5~95% (non-condensing)

Certifications

- FCC, CE

Warranty

- 1-Year Limited

Technical Support

E-mail: support@airlink101.com

Toll Free: 1-888-746-3238

Web Site: www.airlink101.com

* Actual data throughput will vary. Network conditions and environmental factors lower actual data throughput rate. Specifications are subject to change without notice. All products and trademarks are the property of their respective owners. Copyright ©2008 AirLink101®