

Quick Installation Guide

3.5" USB2.0 SATA HDD Enclosure

Model # AEN-35SATA



Package Contents:

- 3.5" SATA Enclosure
- Power Adapter
- USB 2.0 Cable
- Quick Installation Guide
- Screwdriver and Screw Set
- Stand

Section 1

Hard Drive Installation

Step 1 Use the provided screwdriver to remove the two screws on the left side of the enclosure.



Step 2 Pull out the front panel.



Step 3 Attach the SATA connectors to your hard drive.



Step 4 Fasten the hard drive to the enclosure bracket with the provided screws.



Step 5 Replace the front panel into the enclosure.

Step 6 Secure the 2 screws that were removed in steps 1.

Step 7 Connect one end of the power cord to the back of the enclosure and connect the other end to a power outlet.



Step 8 Connect one end of the USB cable to the enclosure and the other end to your computer.

Step 9 Turn the power switch to the ON position. The hard drive is ready to use and you can find it under "My Computer". Some new hard drive needs to be formatted before you can see it under My Computer, please continue on Section 2.

Congratulations! The hard drive installation is complete.

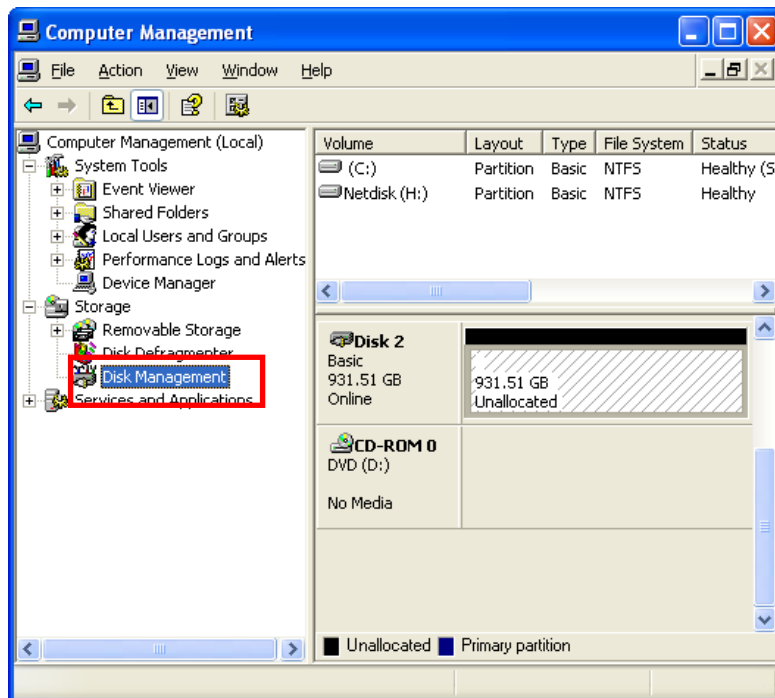
Section 2

Disk Management

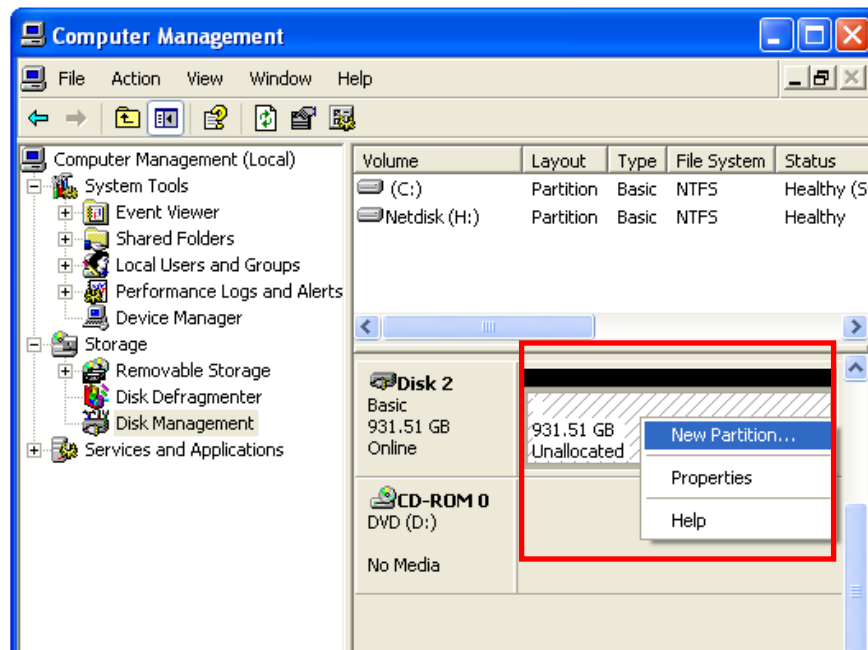
If your disk drive is brand new, you might not be able to see it under “My Computer” before it is formatted. Please go through the following steps to format the new drive.

Step 1 Go to **Control Panel > Administrative Tools** or if you are at category view, go to **Control Panel > Performance and Maintenance > Administrative Tools**, double click on **Computer Management**.

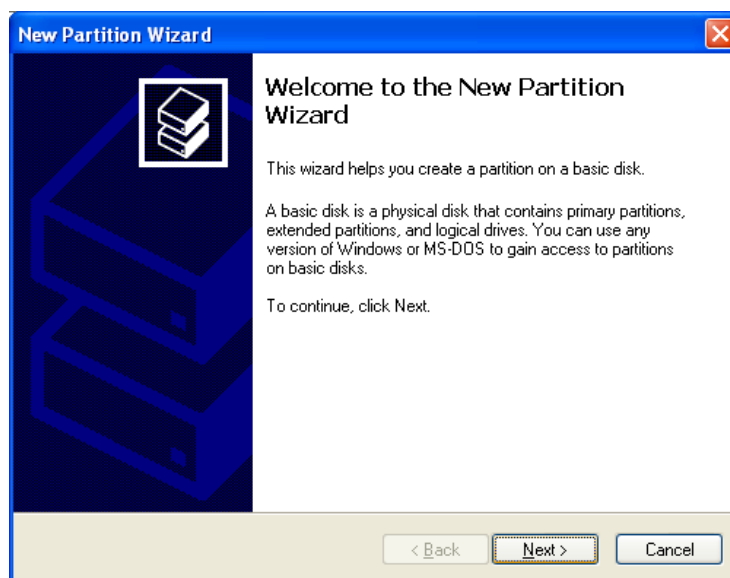
Step 2 Click on **Disk Management** on the left menu bar. The new disk information should be displayed on the right panel.



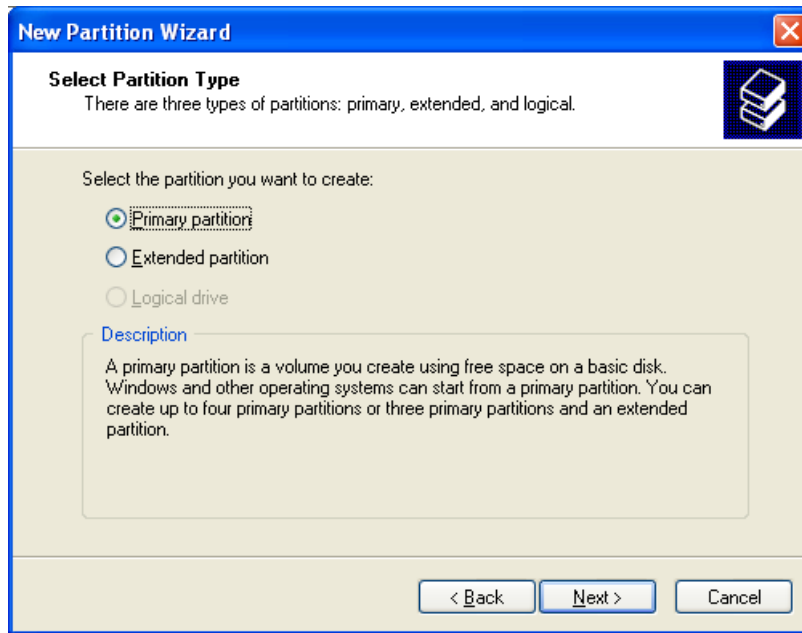
Step 3 Right click on the Unallocated disk and select **New Partition** from the menu.



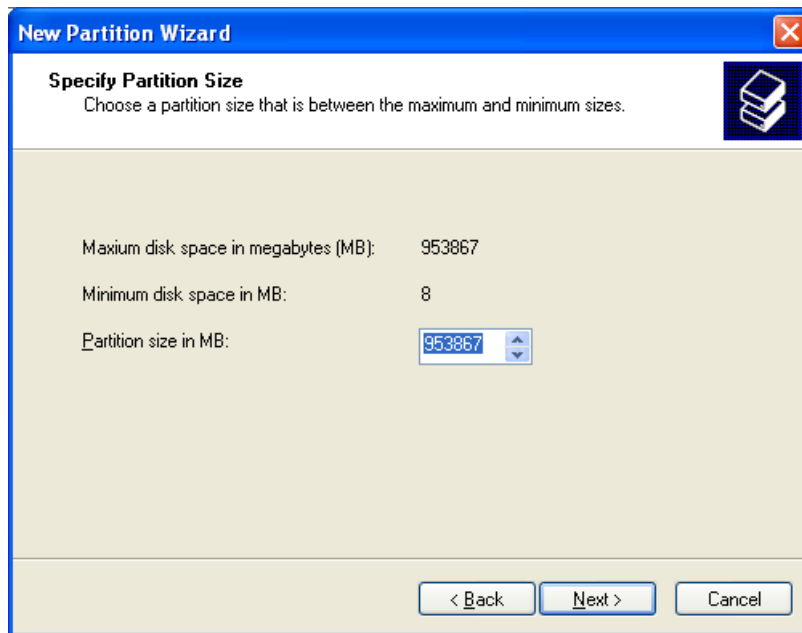
Step 4 Click **Next** to start the New Partition Wizard.



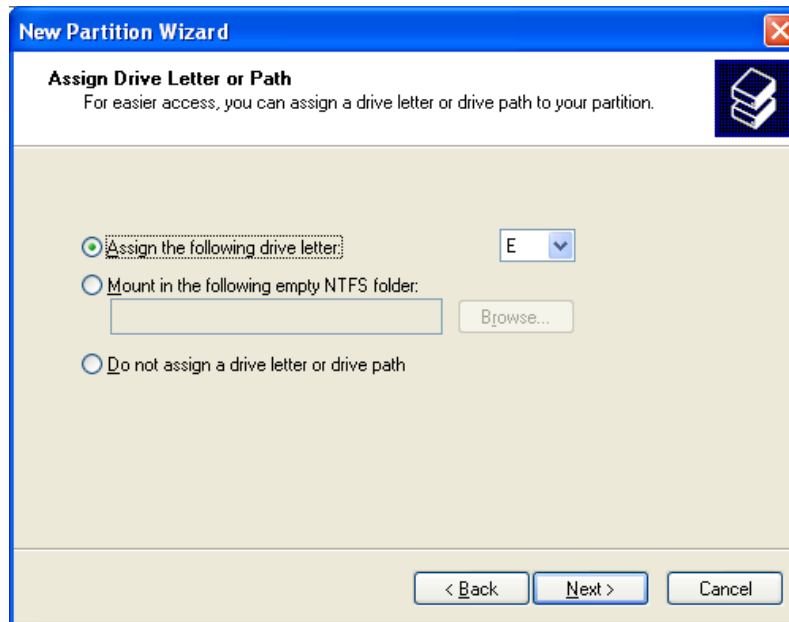
Step 5 Select the desired Partition Type and click **Next**.



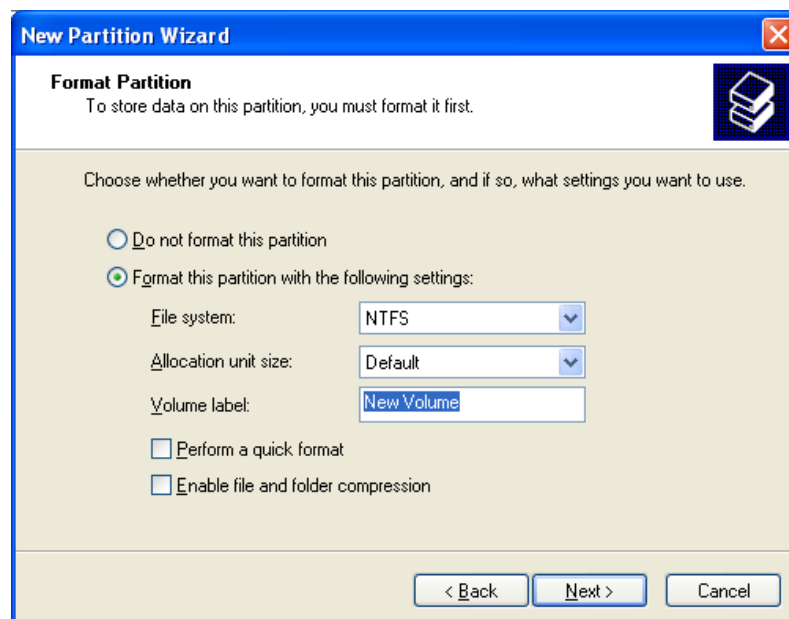
Step 6 Enter the desired Partition Size and click **Next**.



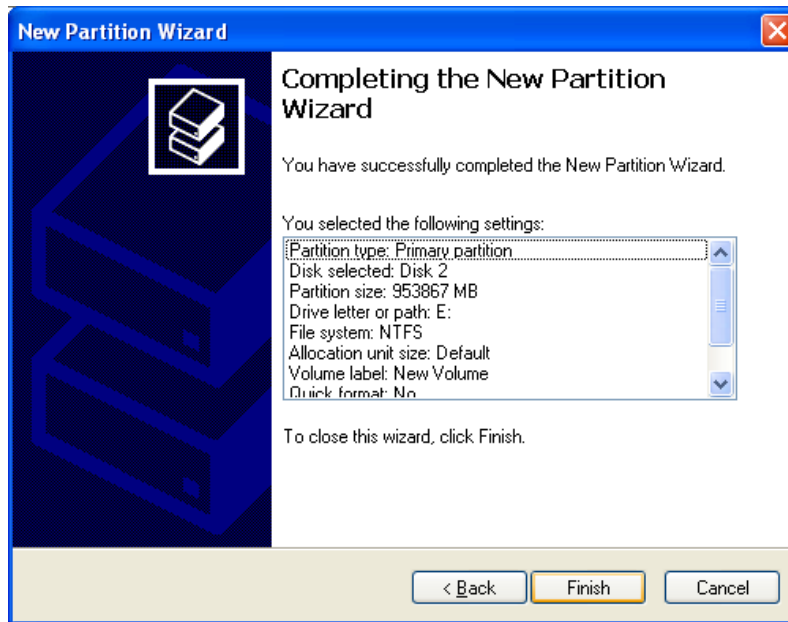
Step 7 Select **Assign the following drive letter** and select a letter for the new disk drive or you can select other options preferred. Click **Next**.



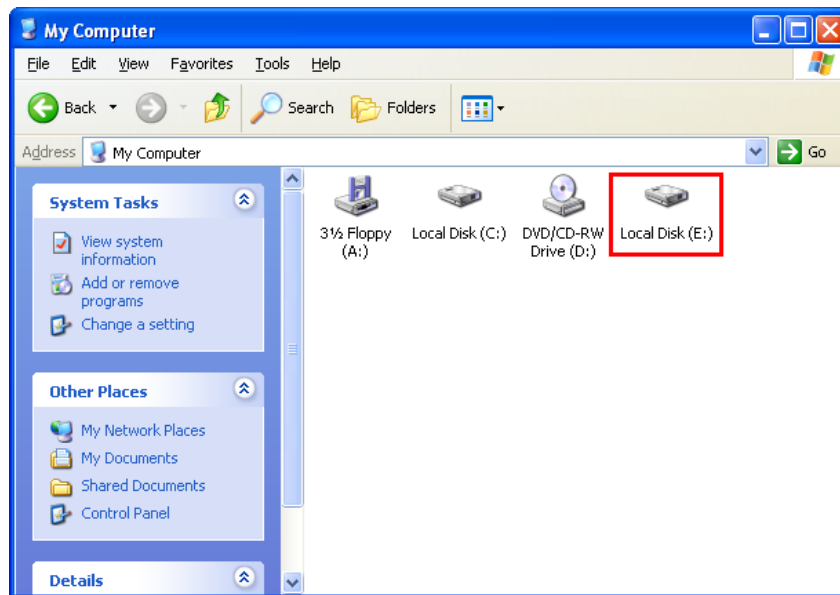
Step 8 Select the File system and change the Volume label or you can select other options preferred. Click **Next** to start formatting the hard drive.



Step 9 Click **Finish** after the New Partition Wizard completed.



Go to **My Computer**, the new drive should be listed there.



Section 3

Technical Support

E-mail: support@airlink101.com

Toll Free: 1-888-746-3238

Website: www.airlink101.com

* Specifications are subject to change without notice. Photos of the product may not reflect the actual content.

Copyright ©2009 AirLink101® All rights reserved. AirLink101, the stylized AirLink101 logo, specific product designations, and all other words and logos that are identified as trademarks and/or service marks are, unless noted otherwise, the trademarks and service marks of AirLink101. All other product or service names are the property of their respective holders. AirLink101 products are protected under numerous U.S. and foreign patents and pending applications, mask work rights, and copyrights.