



Quick Installation Guide

Wireless N 300 Green Router

Model # AR675W



Ver. 2B

Package Contents

Before you begin the installation, please check the items of your package:

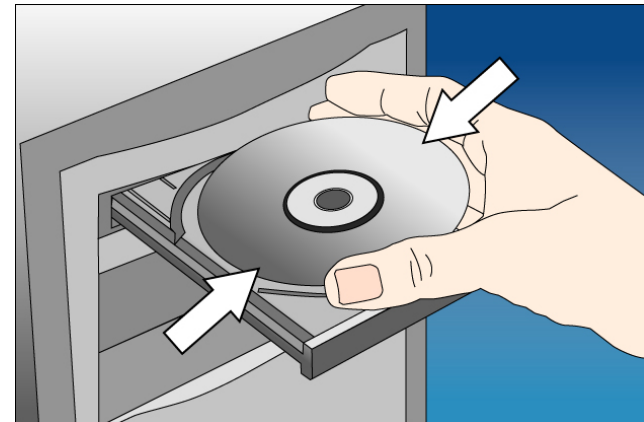
- Wireless N 300 Green Router
- Power Adapter
- Ethernet Cable (Cat.5)
- Setup CD
- Quick Installation Guide

Section 1

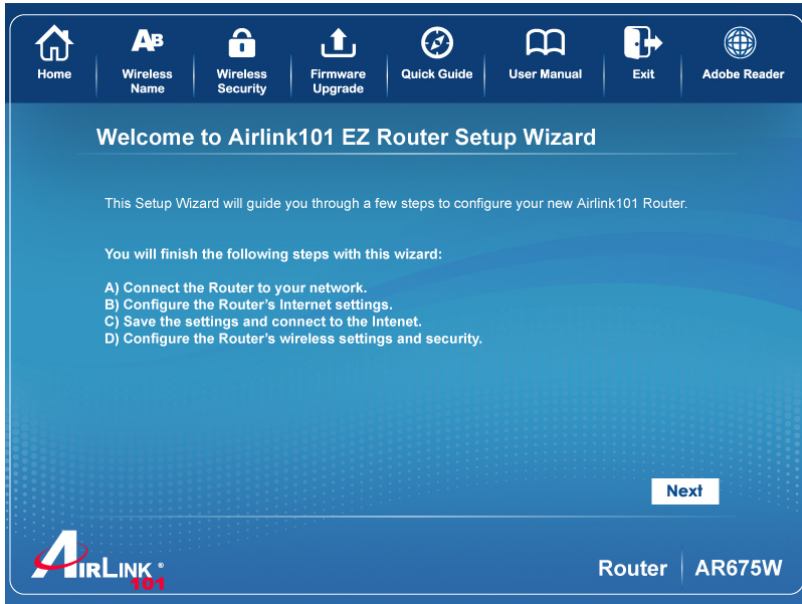
This Quick Installation Guide only provides basic instructions. For detailed information on using this product, please refer to the User's Manual on the supplied CD.

Installing the Router

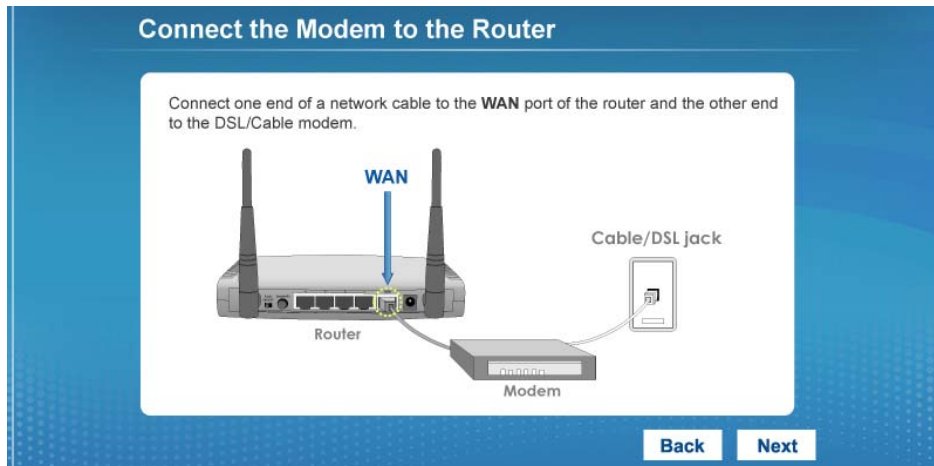
Step 1 Insert the Setup CD into your CD-ROM drive.



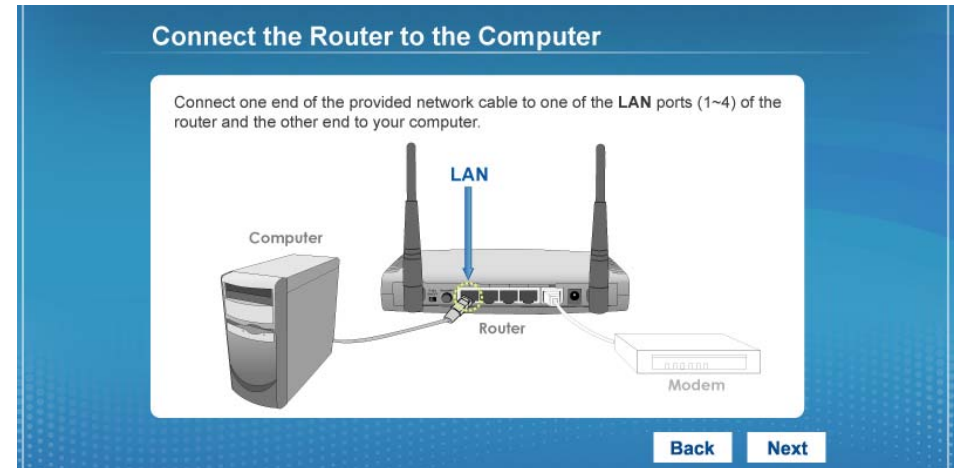
Step 2 Click **Next** to start the configuration.



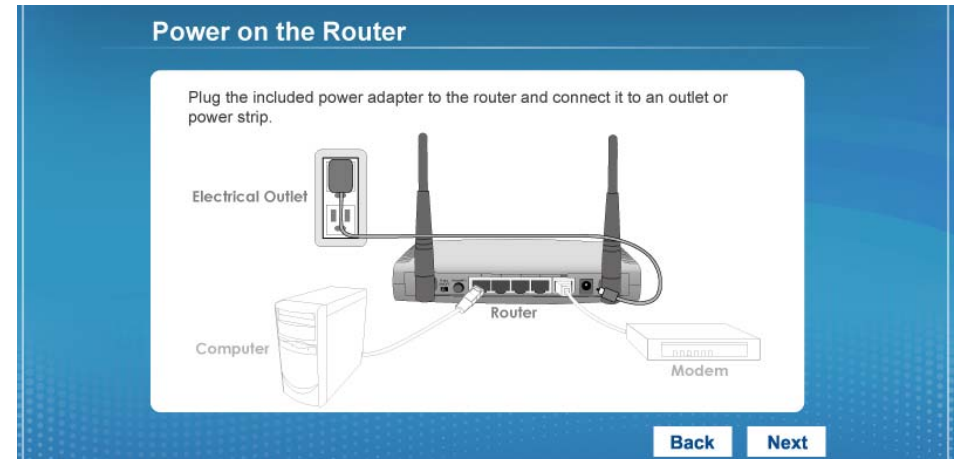
Step 3 Connect one end of a network cable to the WAN port of the router and connect the other end to your DSL/Cable modem.



Step 4 Connect one end of another network cable to the LAN port of the router and connect the other end to your computer.



Step 5 Power on the Router. It will take about 30 seconds.



Step 6 Make sure the LEDs of **POWER**, **WAN**, **WLAN**, and the **LAN** port that the computer is connected to are lit. If not, try the above steps again.

LED Indicators:

LED	Light Status	Description
POWER	On	Router is powered on.
WLAN	On	WPS setup is in progress.
	Off	Wireless network is switched off.
	Flashing	Wireless network is ready and WPS setup is not in progress.
WAN LNK/ACT	On	WAN port is connected.
	Off	WAN port is not connected.
	Flashing	WAN port is transferring or receiving data.
LAN 1-4 LNK/ACT	On	LAN port is connected.
	Off	LAN port is not connected.
	Flashing	LAN port is transferring or receiving data.

Step 7 Enter the Router’s password to log in to the Router. The default password is “admin”. It is recommended to change the router’s password to protect it from being accessed by other users. If you do not wish to change the current password, you can leave New Password and Confirm New Password blank. Click **Next**.



Step 8 Verify the Internet Connection Type the wizard detected. If it is not correct, please configure it manually. Click **Next**.



Note: If you are not sure which Internet Connection Type you use, please contact your Internet Service Provider for this information.

Step 9 Enter the settings for your Internet Connection Type.

Dynamic IP (Cable Modem users)

Click on Clone to clone the MAC address of your PC to the modem then click **Next**.

Configure Dynamic IP Settings

Most cable modem users use this connection type. To set up this connection, please make sure the computer connected to the Airlink101 Router was originally connected to the broadband modem. Please enter the Host Name if it is required by your Internet Service Provider. Click on "Clone" button to clone your computer's MAC address to the router.

Host Name:

MAC Address: **Clone**

Back **Next**

PPPoE (DSL users)

Enter the user name and password provided by your ISP then click **Next**.

Configure PPPoE xDSL Settings

Please enter the user name and password provided by your Internet Service Provider.

User Name: (Example: username@sbcglobal.net)

Password:

Service Name (Optional):

Back **Next**

Step 10 Please wait while the Wizard trying to connect to the Internet. If you see the window "Internet Connection Succeeded", your router has been successfully connected to the Internet. Please click **Next** to configure the wireless settings.

Internet Connection Succeeded

Congratulations! Your router has been successfully configured and connected to the Internet.

Click **Next** to continue configuring the wireless settings.

Next

Step 11 Configure a name for your wireless network. Click **Next**.

Configure Wireless Name for Your Router

Configure a name (SSID) for your wireless network so you can always recognize your wireless network with it. The default SSID is "airlink101".

Wireless Name (SSID):

(Example: myHome, john123,)

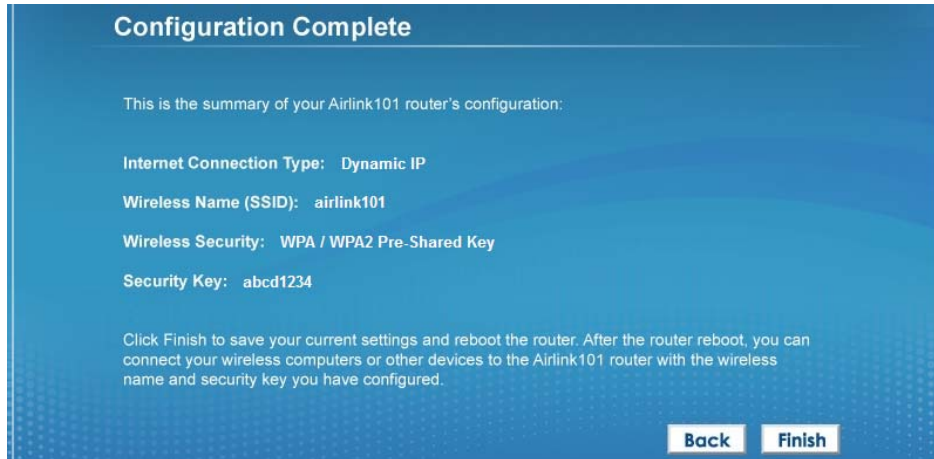
Next

Step 12 Configure the security key for your wireless network. Check **Enable WPA / WPA2 (AES)**. Enter 8 to 63 characters into Pre-Share Key. Click

Next. This will enable WPA/WPA2-AES security mode for your wireless router. Please make sure that all your computers on the wireless network support this mode.



Step 13 Verify the settings you just configured for the Router. Click **Finish** to restart the Router. This will take about 60 seconds.



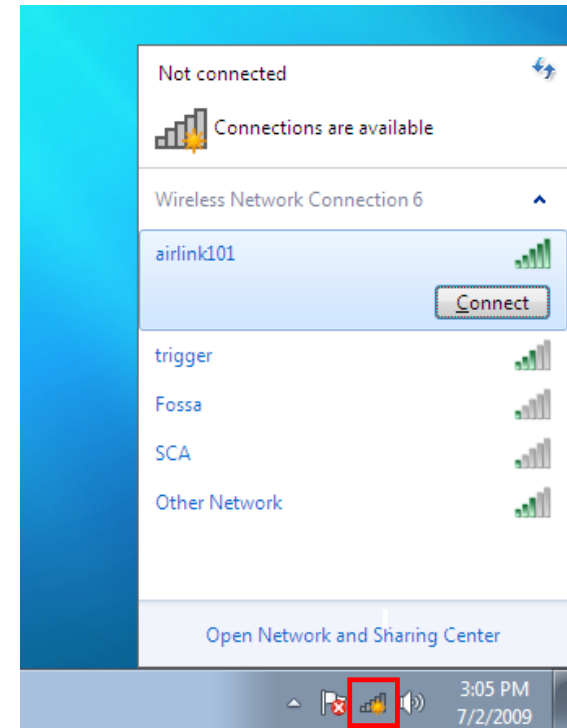
Congratulations! Your router configuration has been finished.

Section 2

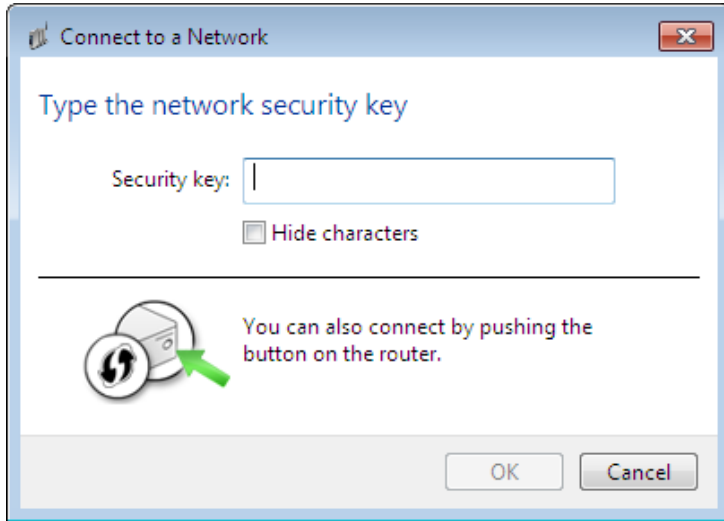
Connecting to the Router Wirelessly

You must configure your wireless computer in order to establish a wireless connection to the router. In this section, you can find the instructions of how to connect to the router wirelessly with your **Windows 7** computer. You can also refer to the manual of your wireless network card for how to connect to the router.

Step 1 Click on the wireless icon in the system tray on your desktop. A list of available network will pop up. Select the one you want to connect to and click **Connect**.



Step 2 Enter the network security key if the wireless network you are attempting to connect to has wireless encryption enabled. Click **OK**. The connection should be now established.



Section 3

Technical Support

E-mail: support@airlink101.com

Toll Free: 1-888-746-3238

Website: www.airlink101.com

*Theoretical maximum wireless signal rate derived from IEEE standard 802.11 specifications. Actual data throughput will vary. Network conditions and environmental factors, including volume of network traffic, building materials and construction, mix of wireless products used, radio frequency interference (e.g., cordless telephones and microwaves) as well as network overhead lower actual data throughput rate. Compatibility with 802.11n devices from other manufacturers is not guaranteed. Specifications are subject to change without notice. Photo of product may not reflect actual content. All products and trademarks are the property of their respective owners. Copyright© 2010 Airlink101®