



Quick Installation Guide

150N Wireless Cardbus Adapter

Model # AWLC6070



Package Content:

- Wireless Cardbus Adapter
- Driver & Utility CD
- Quick Installation Guide



Step 3 The Autorun screen will pop up. Select **Install Driver and Utility** from the menu.

Section 1

Install Utility Software

This Quick Installation Guide only provides the basic instructions. For more advanced features, please refer to the User's Manual on the provided CD.

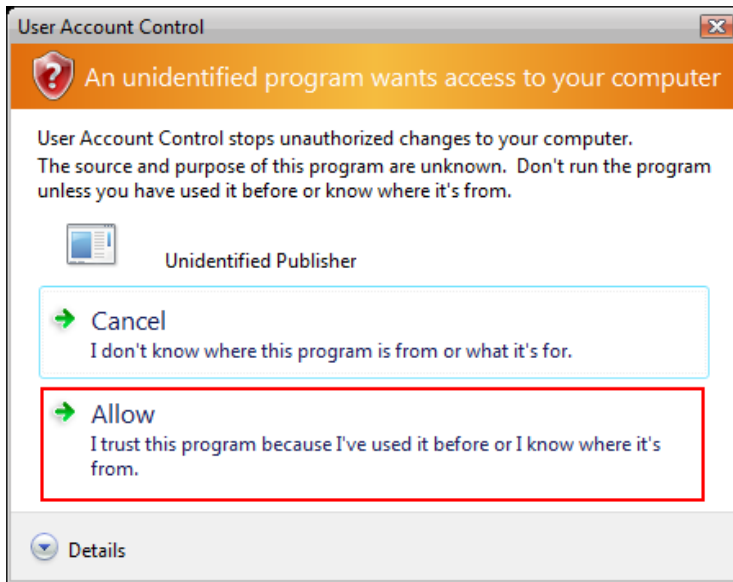
Step 1 Insert the Cardbus adapter into an available Cardbus slot and turn on your computer.

Step 2 After turning on the computer, Windows will launch the **Found New Hardware Wizard**. The Found New Hardware Wizard appears differently depending on your operating system. Click **Cancel** to quit the wizard and insert the Installation CD into your CD drive.

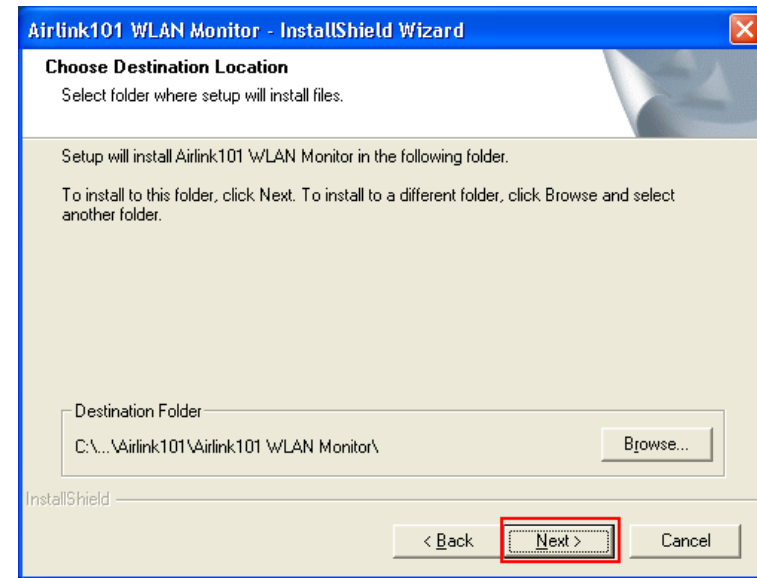


Note: If the Autorun screen doesn't appear automatically go to **Start, Run**, and type **D:\Utility\Setup.exe** (where **D** is the letter of your CD drive) and click **OK**.

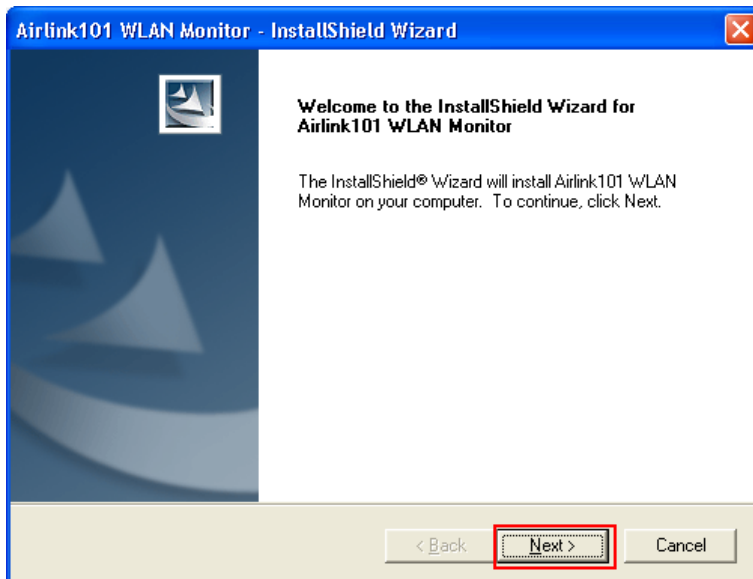
Windows Vista users: At this point, you may get a warning message like the one below. Make sure that you click **Allow** to continue with the installation.



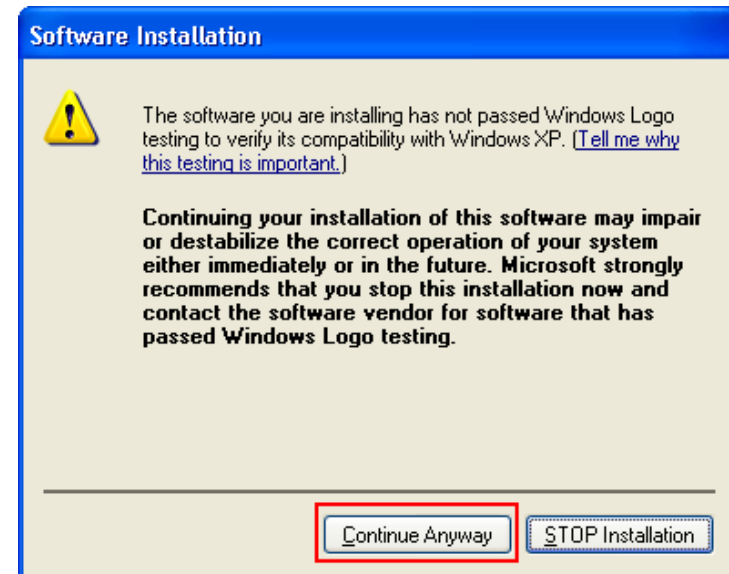
Step 5 Click **Next** to accept the default destination folder.



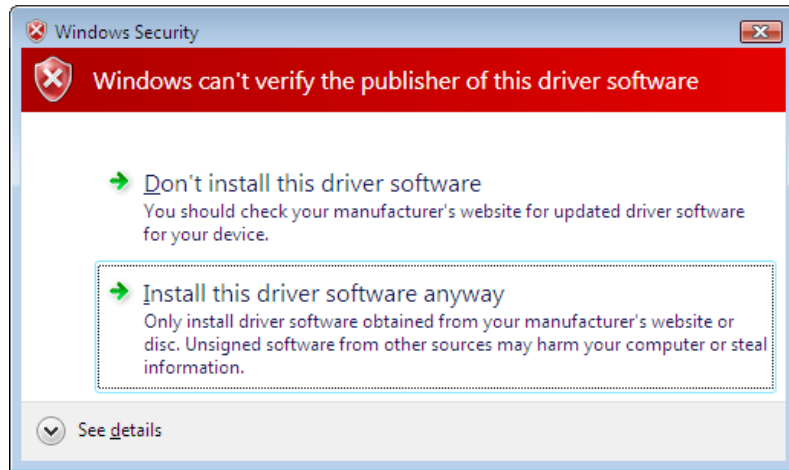
Step 4 Click **Next** at the welcome screen.



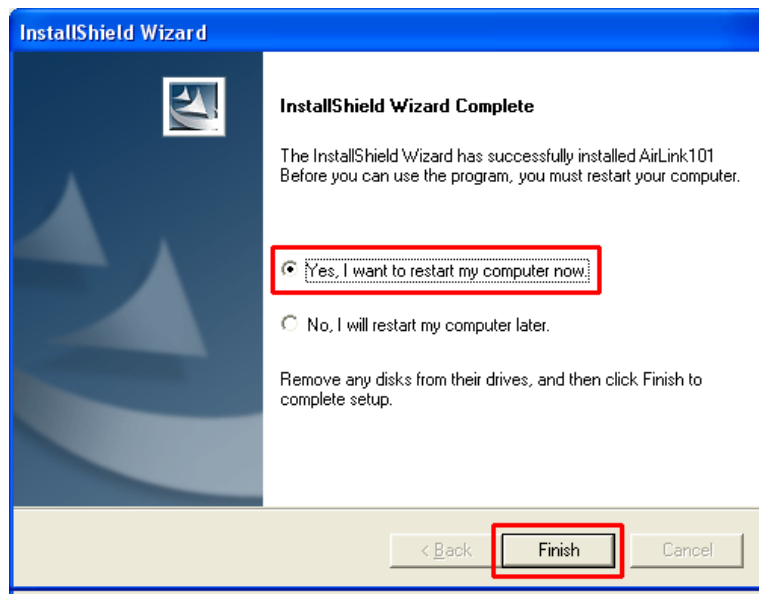
Step 6 Click **Continue Anyway** at the Windows Logo Screen. (For Windows 2000, click **Yes** at the Digital Signature Not Found prompt).



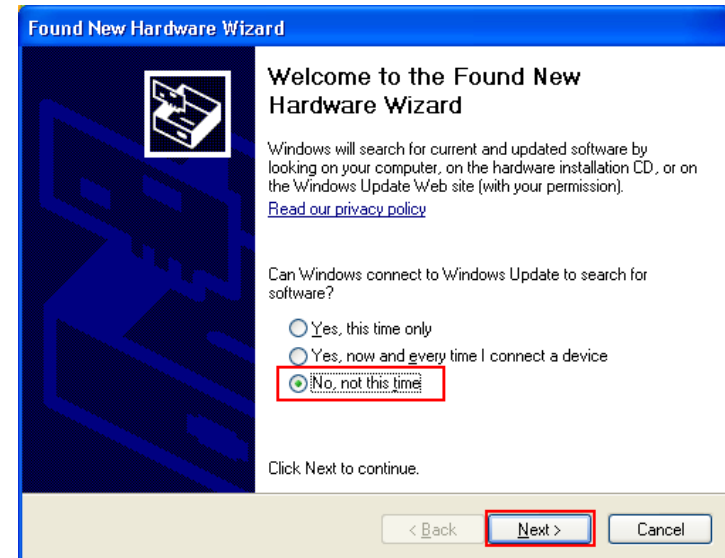
For Windows Vista, click the **Install this driver software anyway** button when the security warning appears.



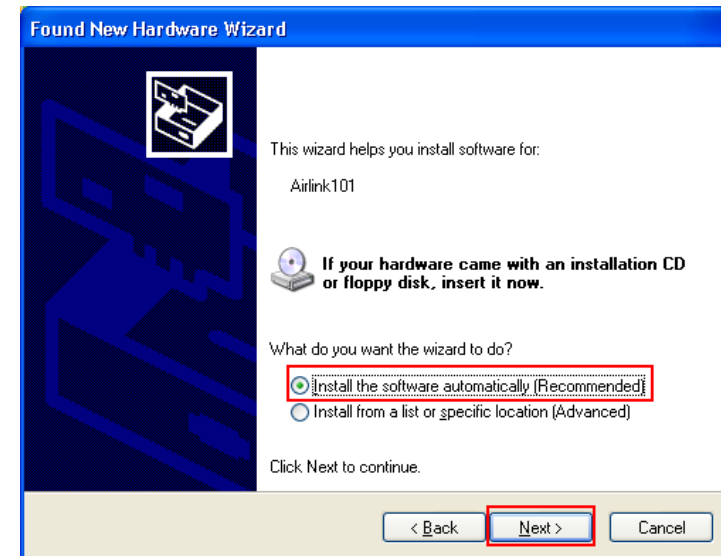
Step 7 Click **Yes, I want to restart my computer now** and then **Finish** to restart your computer.



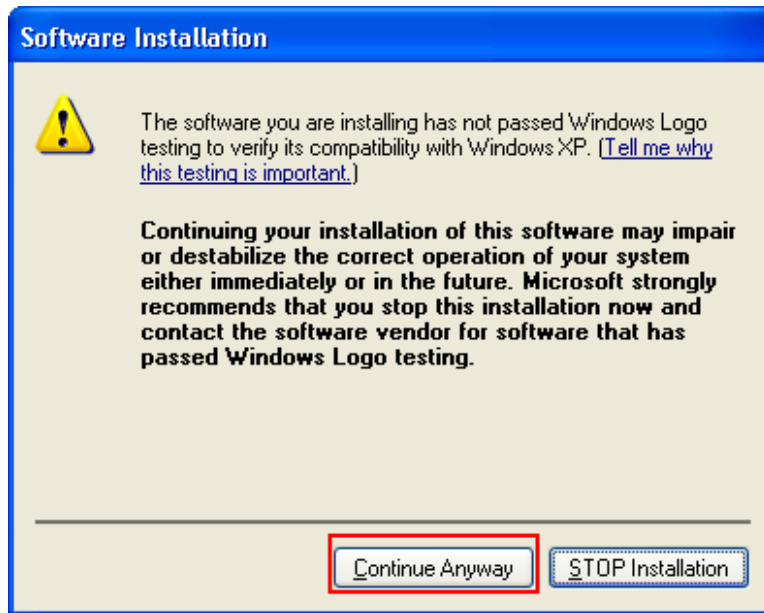
Step 8 After the computer is restarted, Windows will ask to connect to Windows Update, select **No, not this time** and click **Next**. If this screen does not appear, you can skip to section 2.



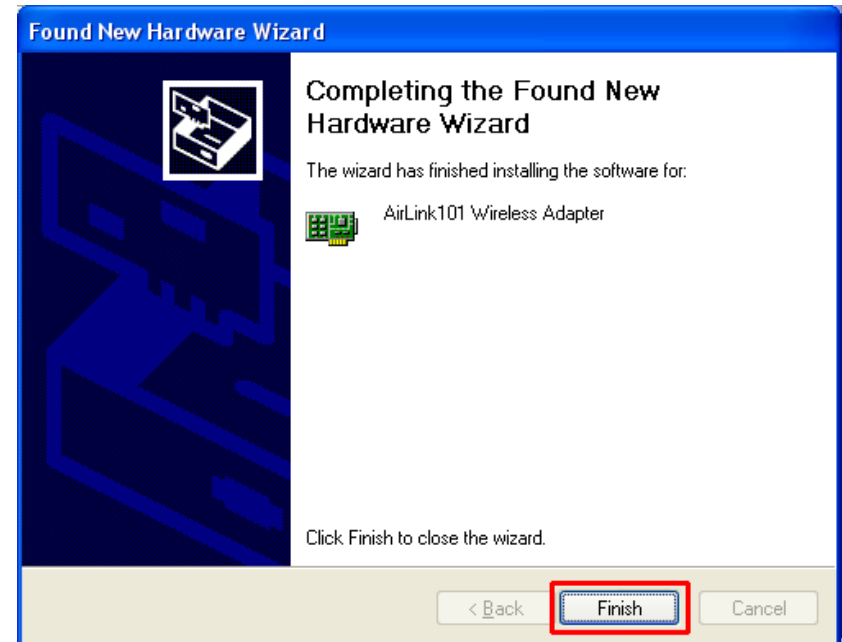
Step 9 Select **Install the software automatically** and click **Next**.



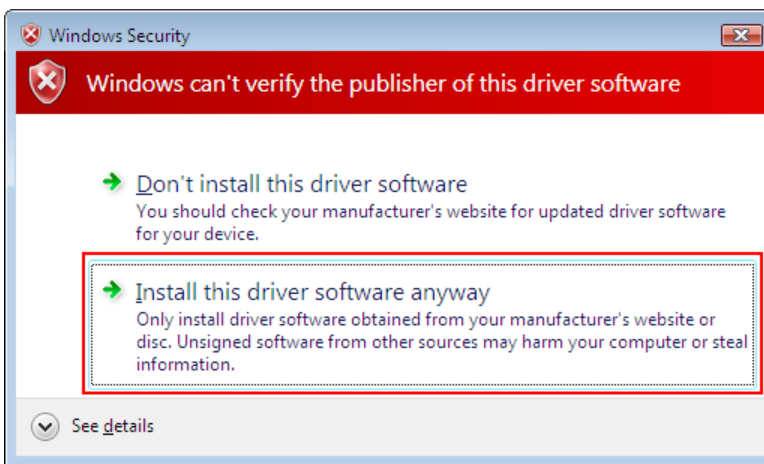
Step 10 Click **Continue Anyway** at the Windows Logo Screen. (For Windows 2000, click **Yes** at the Digital Signature Not Found prompt).



Step 11 Click **Finish**.



For Windows Vista, click the **Install this driver software anyway** button when the security warning appears.



Section 2

Configuring the Wireless Adapter

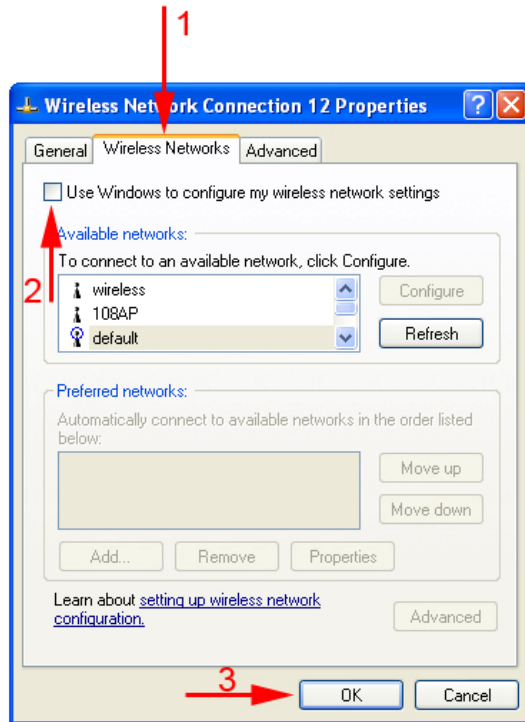
Note to Windows XP Users:

You must disable the Wireless Zero Configuration Utility. Please follow the steps below to disable XP's wireless utility. Windows Vista users can skip the following instructions and go to **Step 1**

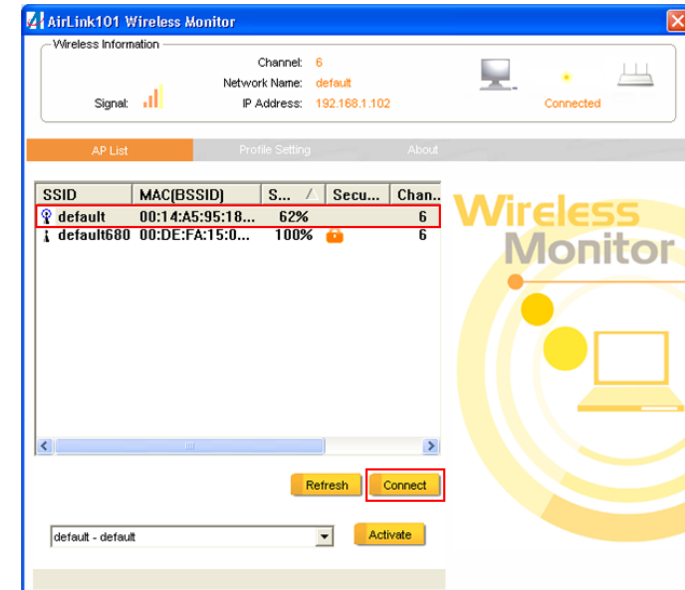
Double-click on the **Wireless Network Connection Icon** in the system tray and then click on **Properties** or **Advanced**.



When the new wireless network connection properties window appears, go to the **Wireless Networks** tab, uncheck the **Use Windows to configure my wireless network settings** check box and click **OK**.

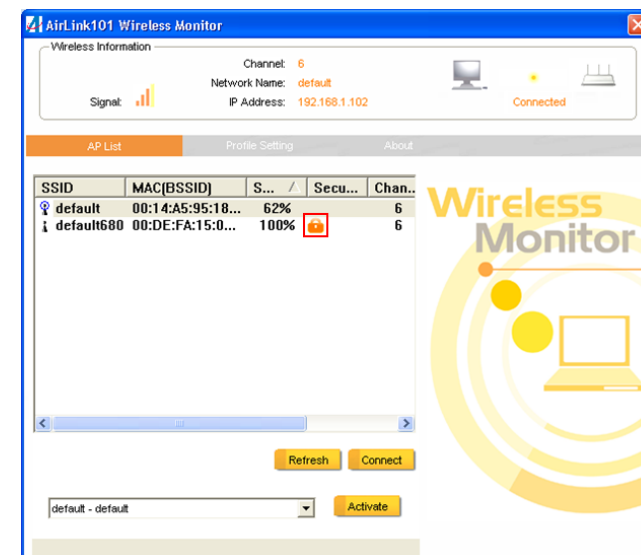


Step 2 Go to the **AP List** tab, select the **SSID** (Network Name) of the wireless network you wish to connect to, and click **Connect**.

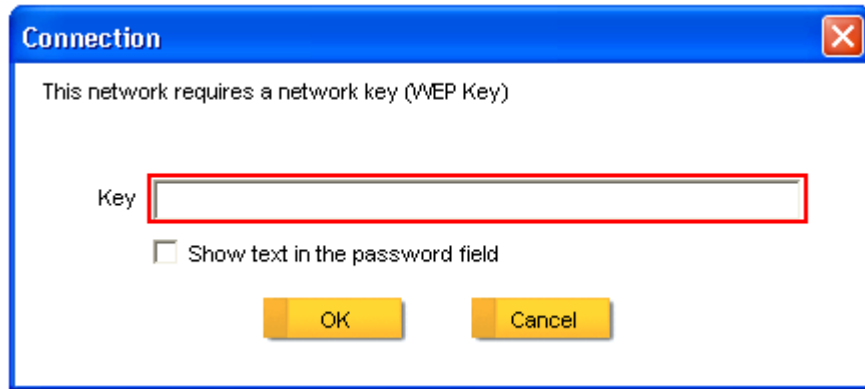


If the network you are attempting to connect to is configured for encryption, you will see an orange lock icon next to the network.

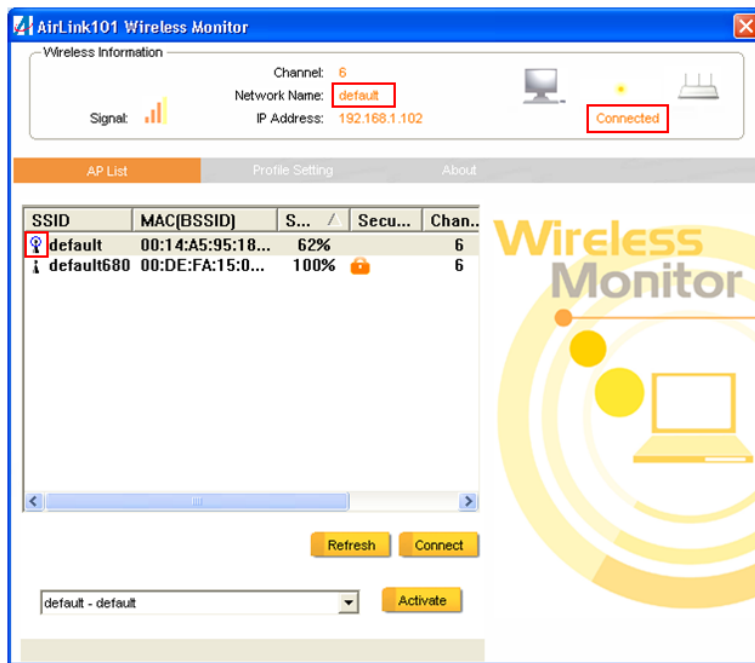
Step 1 To open the utility, double click on the Wireless Monitor icon in the system tray at the bottom right-hand corner of your screen.



When you click on it and click connect, a box will pop up requesting the wireless encryption key for the router. Enter the encryption key into the box and click **OK**.



Step 3 You should now be connected. You should see “Connected” in the top, right hand corner, and there will be a blue circle around the antenna icon next to the network name.



Troubleshooting: If you are experiencing problems with the connection (unable to connect, low signal strength, slow connection speed, not working, unstable wireless connection) you will want to tune your router’s signal by changing channels on the router or adjusting the angle its antenna(s).

You do not need to change the channel on the card, it will automatically pick up the new channel after you reboot. The only channel that you need to change is the router’s channel.

Your router has 11 different channels to choose from for North America. Start with channel 1 and work your way up. Each time you change the channel on the router, make sure that you restart the wireless computer before trying to connect again. Keep going through the channels until you find one that gives you a stable connection.

For instructions on changing channels, refer to the documentation that came with your router.

Section 3

Technical Support

E-mail: support@airlink101.com

Toll Free: 1-888-746-3238

Web Site: www.airlink101.com

*Theoretical maximum wireless signal rate derived from IEEE 802.11g standard and IEEE 802.11n draft specification version 2.0. Actual data throughput will vary. Network conditions and environmental factors, including volume of network traffic, building materials and construction, mix of wireless products used, radio frequency interference (e.g., cordless telephones and microwaves) as well as network overhead lower actual data throughput rate. Specifications are subject to change without notice. All products and trademarks are the property of their respective owners. Copyright ©2008 AirLink101®