



Quick Installation Guide

Dual Band Wireless N USB Adapter

Model # AWLL7025



Thank you for purchasing Airlink101 Dual Band Wireless N USB Adapter. Please follow the Quick Installation Guide to configure this product. For detailed installation instructions on advanced features, please refer to the User's Manual that can be found on the provided CD.

Before you begin the installation, please check the items of your package:

Package Contents:

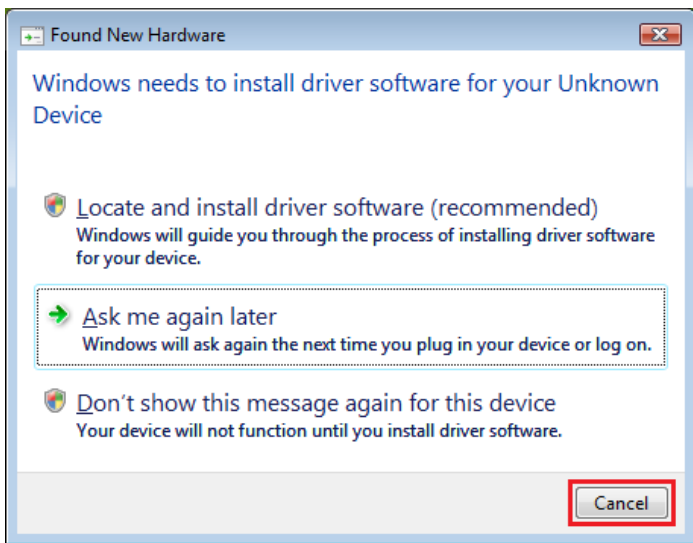
- Dual Band Wireless N USB Adapter
- USB Extension Cable
- Driver & Utility CD
- Quick Installation Guide

Section 1

Install Utility and Driver

Step 1 Insert the USB adapter into an available USB port of your computer.

Step 2 Windows will launch the **Found New Hardware Wizard**. The Found New Hardware Wizard appears differently depending on your computer operating system, click **Cancel** to quit the wizard and insert the Installation CD in the CD drive. Continue to Step 3.

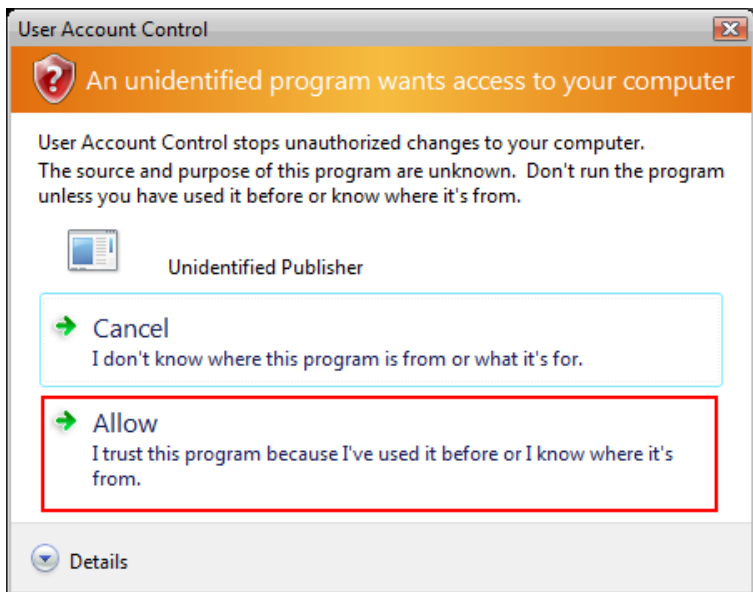


Step 3 The Autorun screen will pop up. Click **Install Utility and Driver** from the menu.

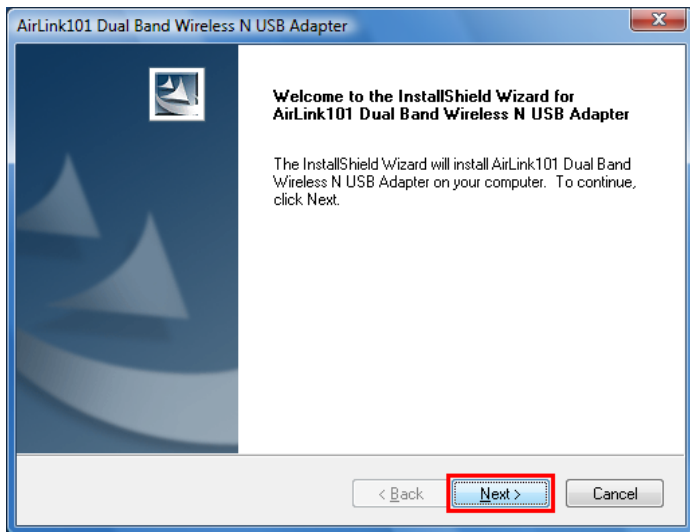


Note: If the Autorun screen doesn't appear automatically go to **Start, Run,** and type **D:\Utility\Setup.exe** (where **D** is the letter of your CD drive) and click **OK**.

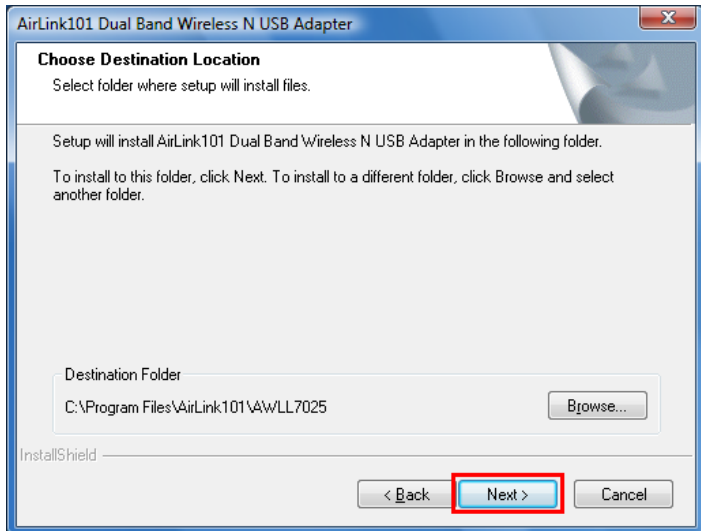
Windows Vista Users: At this point, you may get a warning message like the one below. Make sure that you click **Allow** to continue with the installation.



Step 4 The InstallShield Wizard will pop up. Click **Next** at the screen.



Step 5 Click **Next** to begin the installation.



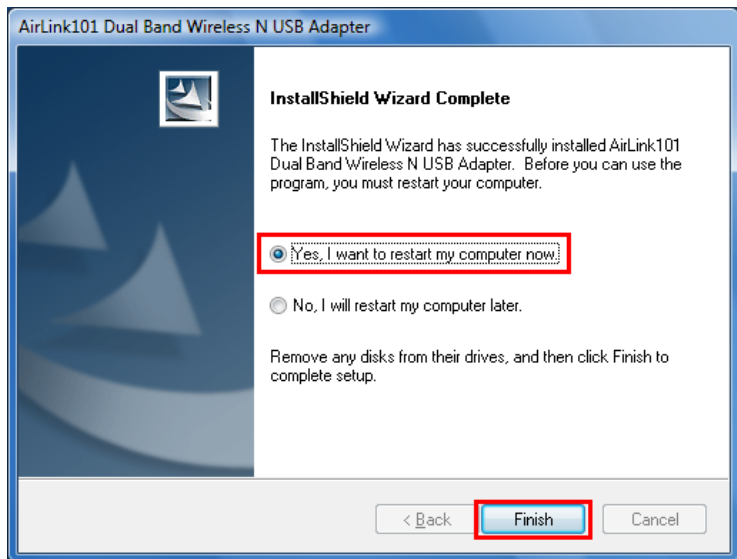
Step 6 Give Permission to Window to install the driver software

For Windows Vista, click the **Install this driver software anyway**.

For Windows XP click **Continue Anyway** at the Windows Logo Screen.

For Windows 2000, click **Yes** at the Digital Signature Not Found prompt.

Step 7 Click **Finish** to complete the installation.



Section 2

Configure the Wireless Adapter

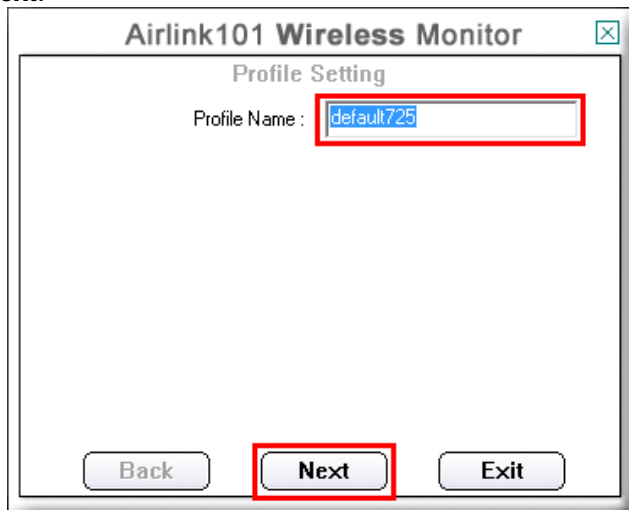
Open the Airlink101 Wireless Monitor utility by double clicking on the Airlink101 Wireless Monitor Utility icon in the system tray at the bottom right-hand corner of your screen.



Step 1 Click on **AP List** tab and select a Network Name (SSID) from the list you want to connect to and click **Connect**.



Step 2 If encryption is not enabled for the selected access point / router, skip to Step 7. Otherwise, enter a **Profile Name** for your wireless setting and click **Next**.



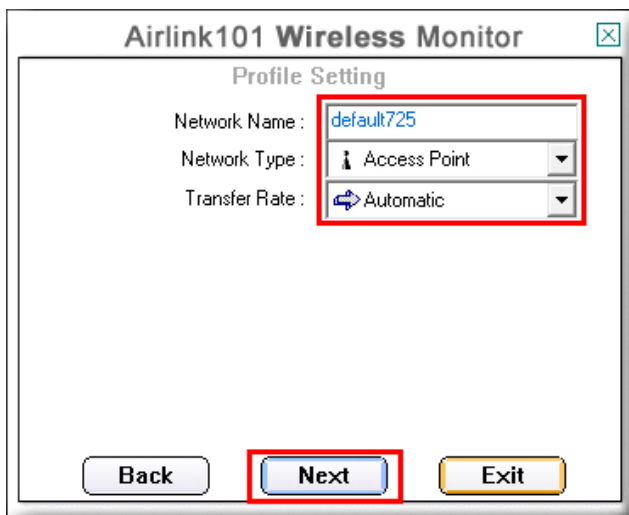
Airlink101 Wireless Monitor

Profile Setting

Profile Name : default725

Back Next Exit

Step 3 Verify that the **Network Name** matches the wireless network you selected to connect and click **Next**.



Airlink101 Wireless Monitor

Profile Setting

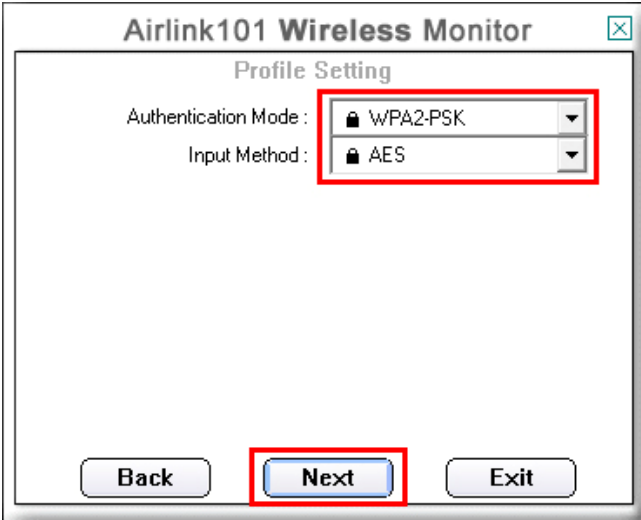
Network Name : default725

Network Type : Access Point

Transfer Rate : Automatic

Back Next Exit

Step 4 Verify that the Authentication Mode and Input Method match to your wireless router's settings and click **Next**.



Airlink101 Wireless Monitor

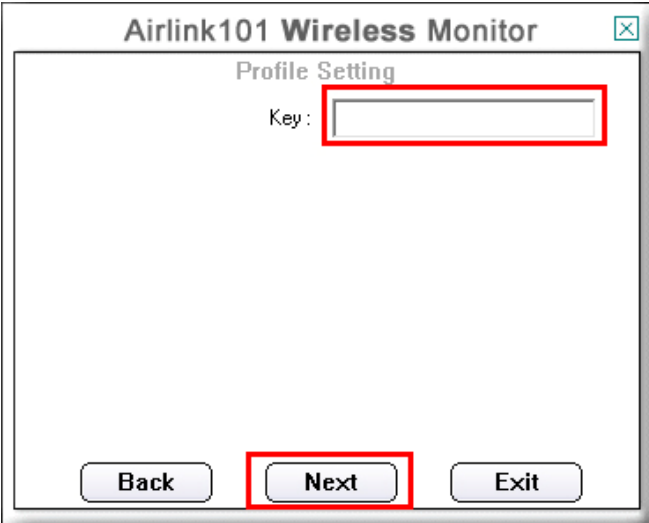
Profile Setting

Authentication Mode : WPA2-PSK

Input Method : AES

Back Next Exit

Step 5 Input the encryption key for your wireless network and click **Next**.



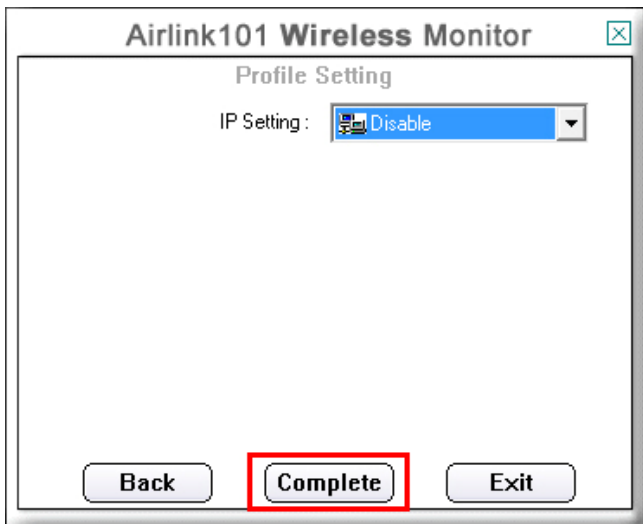
Airlink101 Wireless Monitor

Profile Setting

Key :

Back Next Exit

Step 6 Keep the default IP Setting and click **Complete**.



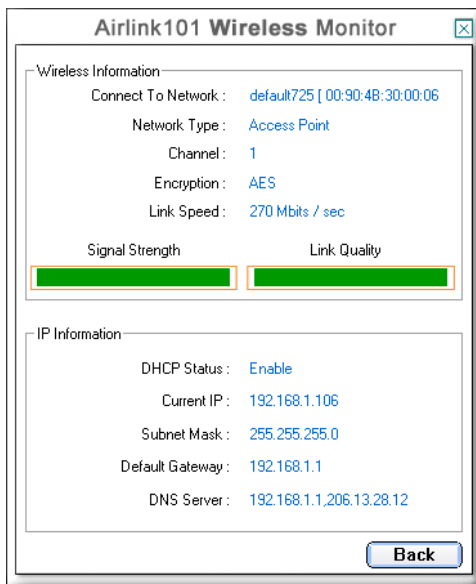
Step 7 You should see a blue circle around the antenna icon indicating a valid connection.



Step 8 Go to the **Link Information** tab and click on the **More** button.



Step 9 Verify that you are receiving adequate Signal Strength and Link Quality and that you have been assigned a valid IP address (instead of all 0's).



If you do not have adequate Signal Strength, try re-orienting the Access Point and/or the USB Adapter by using the USB Extension Cable included in the package to get a better reception.

Troubleshooting

If you are experiencing problems with the connection (unable to connect, low signal strength, slow connection speed, not working, unstable wireless connection) you may want to tune your router's signal by changing the frequency (if your router supports 5 GHz) and/or channels on the router. You do not need to change the frequency or channel on the Adapter; it will automatically pick up the new settings after you reboot the router.

For instructions on changing channels, please refer to the documentation that comes with the router.

Section 3 (Optional)

Connecting to the Router with WPS

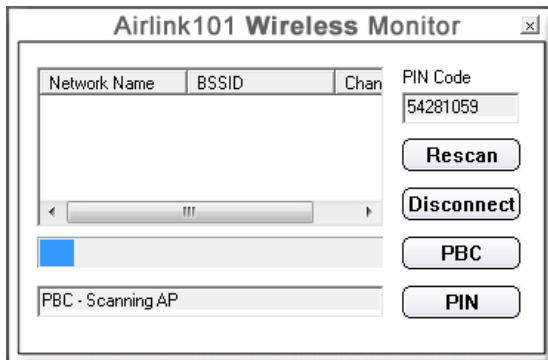
Airlink101 Dual Band Wireless N USB Adapter has an innovated built-in WPS (WiFi-Protected Setup) push button which can synchronize and build a connection between any WPS support router safely and easily. If your wireless router does not support WPS feature, you will need to set up the wireless security manually and you can skip this section.

In the instructions below, we are going to use the Airlink101 Dual Band Wireless N Router AR725W and Dual Band Wireless N USB Adapter AWLL7025 as the example.

Step 1 Push and hold the WPS button on the bottom of the Adapter until you see the WPS window pops up on the computer monitor.



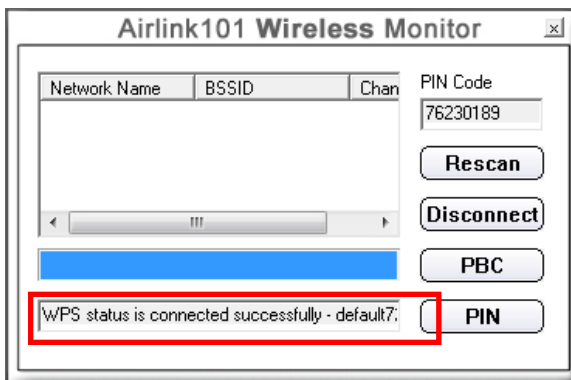
WPS window:



Step 2 Push the WPS button on the Router, and the blue LED will start blinking.



Step 3 The Router will now start the handshake with the wireless adapter. When you see the window below, the wireless connection has been established.



Section 4

Technical Support

E-mail: support@airlink101.com

Toll Free: 1-888-746-3238

Website: www.airlink101.com

*Theoretical maximum wireless signal rate derived from IEEE standard 802.11g and draft 802.11n specifications. Actual data throughput will vary. Network conditions and environmental factors, including volume of network traffic, building materials and construction, mix of wireless products used, radio frequency interference (e.g., cordless telephones and microwaves) as well as network overhead lower actual data throughput rate. This product is based on IEEE draft 802.11n specification and is not guaranteed to be compatible with future versions of IEEE 802.11n specification. Compatibility with draft 802.11n devices from other manufactures is not guaranteed. Specifications are subject to change without notice. Photo of product may not reflect actual content. All products and trademarks are the property of their respective owners. Copyright ©2009 Airlink101®